



Key Benefits Summary: ExpressLink® 2.1.0.0

This Key Benefits Summary provides information about the enhancements available with ExpressLink 2.1.0.0. Read the sections that are most relevant to your needs.

- [Executive Summary](#) - a high-level overview
- [General Overview](#) - information relevant to election officials and poll workers
- [Enhancement Details](#) - detailed descriptions of each enhancement

Executive Summary

ExpressLink has been updated to increase the number of characters required for the optional Station ID that is printed in the activation card header. It now also parses the Split Ballot ID field in a voter's record in Monitor Mode.

General Overview

The following section provides a general overview of enhancements made to ExpressLink 2.1.0.0.

Note

Refer to [Enhancement Details](#) for additional information.



For complete details about these enhancements, refer to the *ExpressLink Operator's Guide*.

ExpressLink enhancements include:

- Station ID increased from two characters to three, allowing for more combinations.
- In Monitor Mode, ExpressLink now parses the Split Ballot ID field in an electronic pollbook request for an Activation Card at voter check-in. Previously, Manual Mode needed to be used when an election had more than one ballot style per precinct, split and party combination.

Enhancement Details

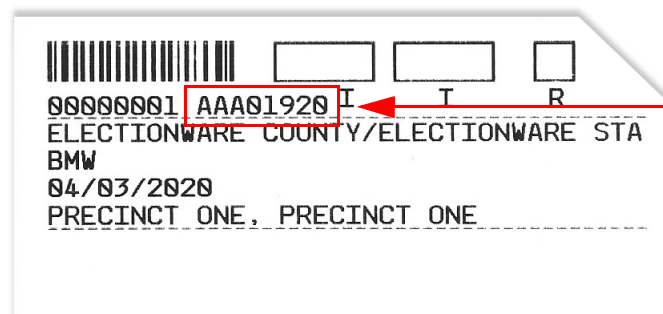
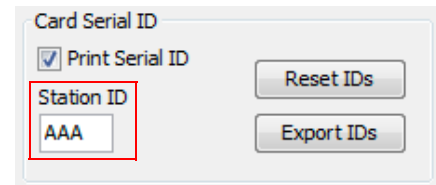
This section contains detailed information about each ExpressLink 2.1.0.0 enhancement.

Station ID

The optional Station ID now requires three uppercase characters, increasing the number of possible Station IDs from 676 to 17,576.

Station IDs can be used to represent the precinct, polling location, or other identifying characteristic you determine. If a polling location uses more than one ExpressLink terminal, they can share the same Station ID, or each can have a unique ID.

The Station ID can be used only in conjunction with the randomly generated five-digit Serial ID. Both are printed on ExpressVote activation cards and encoded on ExpressTouch smart cards.



Card Serial ID
with Station ID
enabled

Split Ballot ID

When an election has more than one ballot style per precinct/split/party combination, ExpressLink can now process the Split Ballot ID field in Monitor Mode.

Information for the Split Ballot ID is contained in the VRAB.bod and the VRAB.val files.

When a voter checks in using an electronic pollbook, the system will automatically print the correct activation barcode on the ExpressVote activation card, or encode it on an ExpressTouch smart card.

Previously, Manual Mode needed to be used in order to select the correct ballot style.