

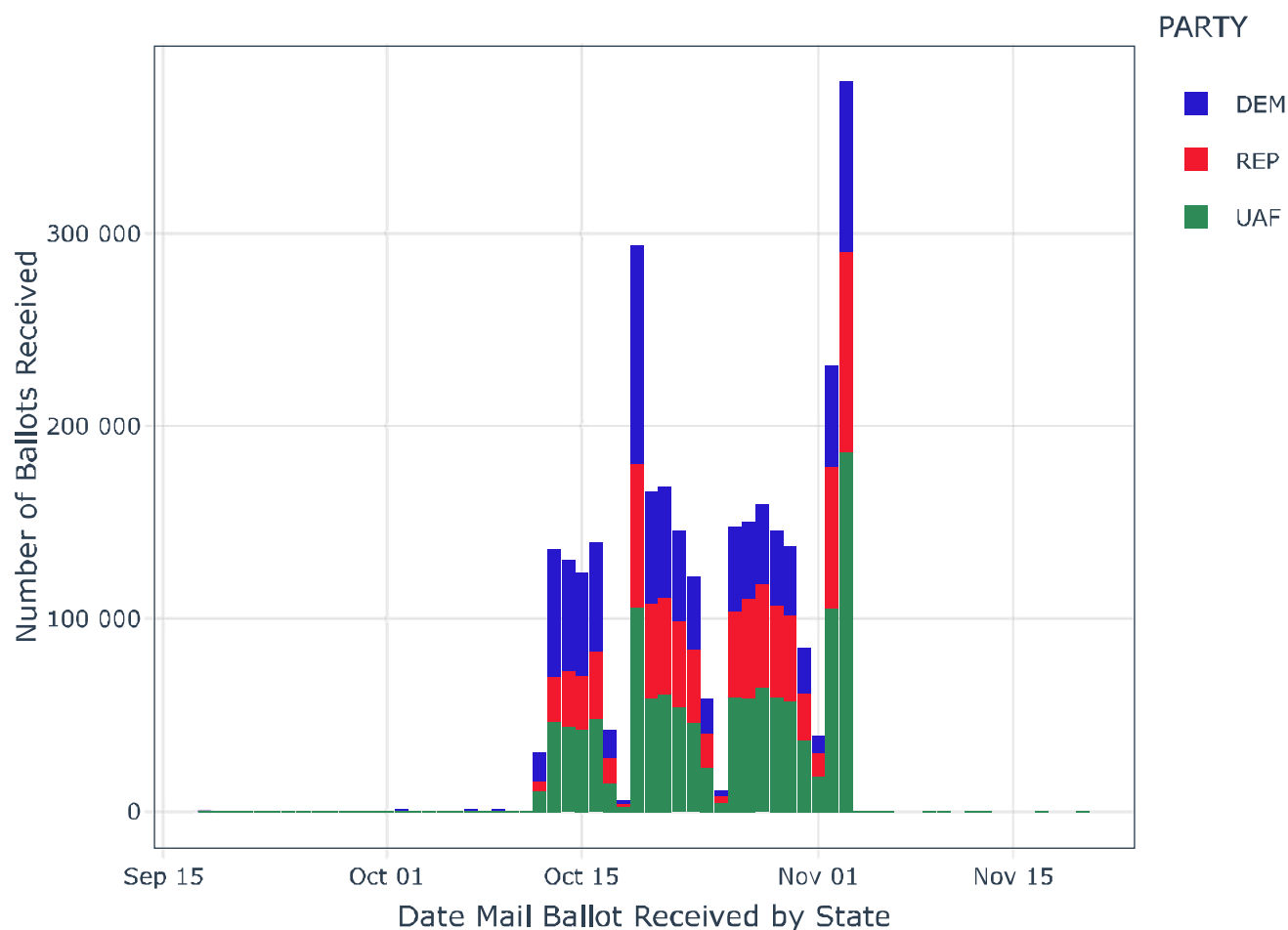
Colorado 2020 Vote Information

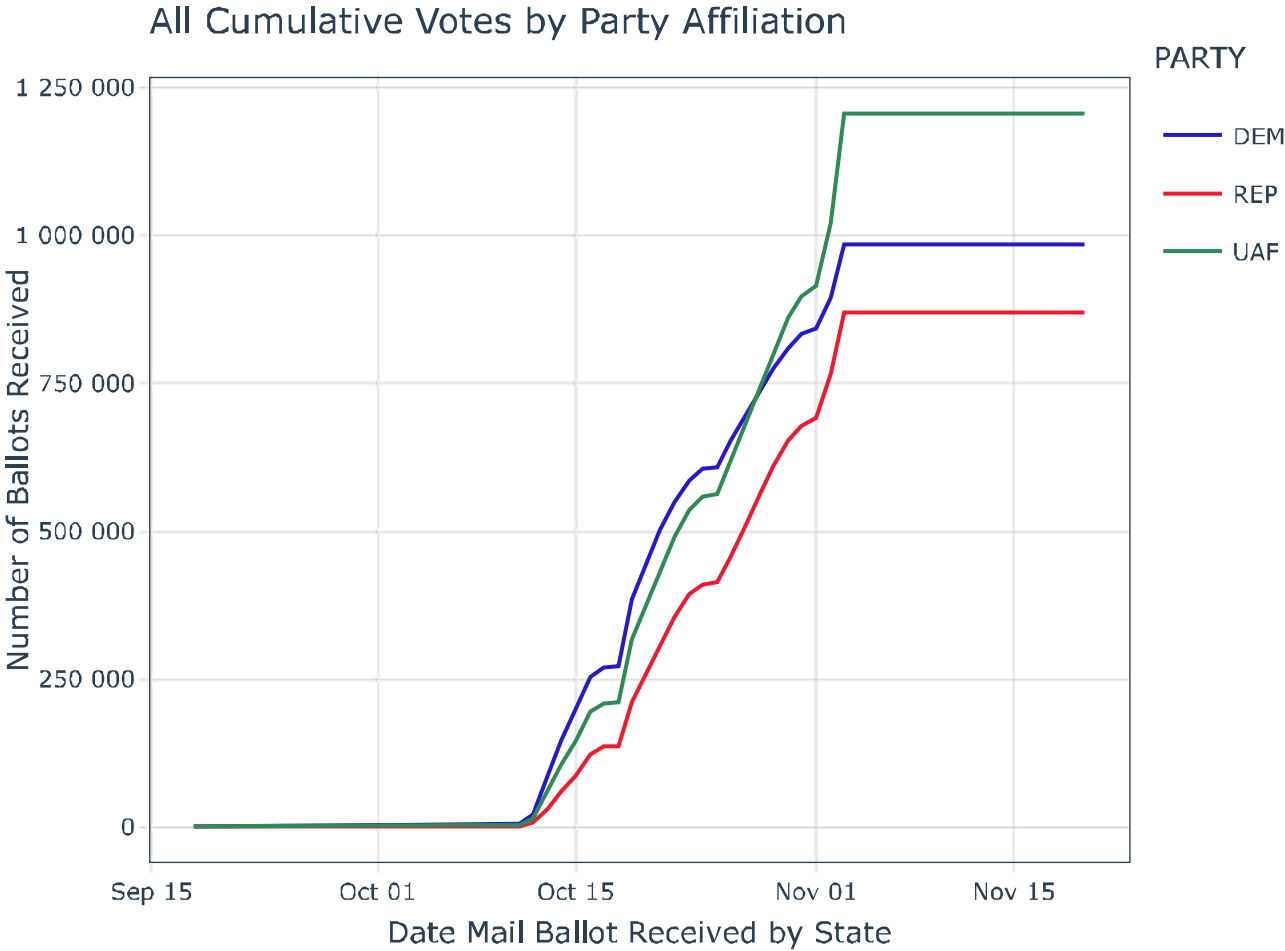
Vote information obtained from Colorado SOS via CE068-20201114-0353 file

Summary

- Large, heavy republican counties of El Paso, Weld, and Douglas county all had the same pattern of unaffiliated ballots overtaking the republican ballots with received by dates from the state of Colorado the day before and day of the 2020 general election. The final tally in each county was a slim margin of unaffiliated ballots over the republican ballots.
 - There was a similar "F" pattern noted in each of these counties that was noted in the WI and MI presidential counts
- Large, heavy democrat counties of Denver, Arapahoe, Jefferson, and Adams did not see the same pattern of unaffiliated ballots overtaking the democrats ballots the day before and day of the 2020 general election. Either the unaffiliated ballots overtook democrat ballots well before the election or didn't overtake the democrat ballots at all.

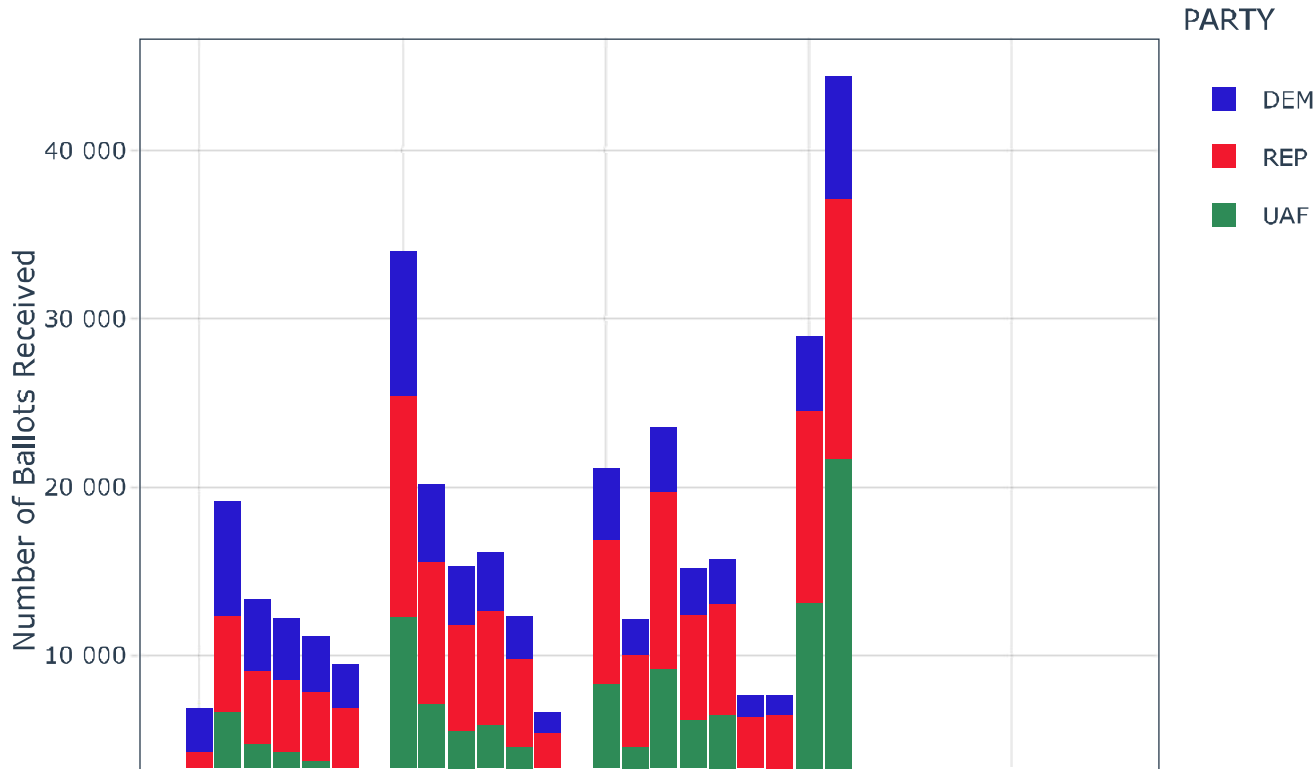
Plotting Count of Affiliated Party Ballots by Date Received - Statewide

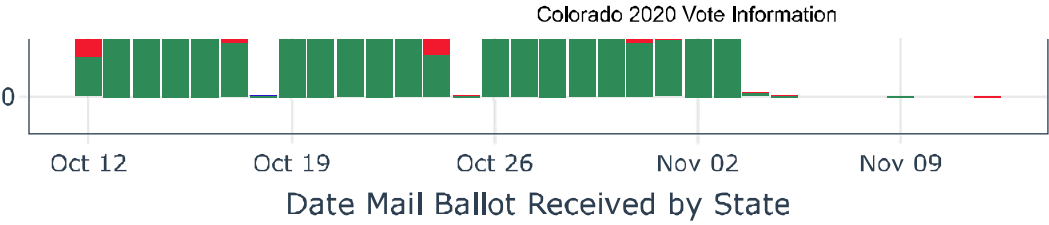




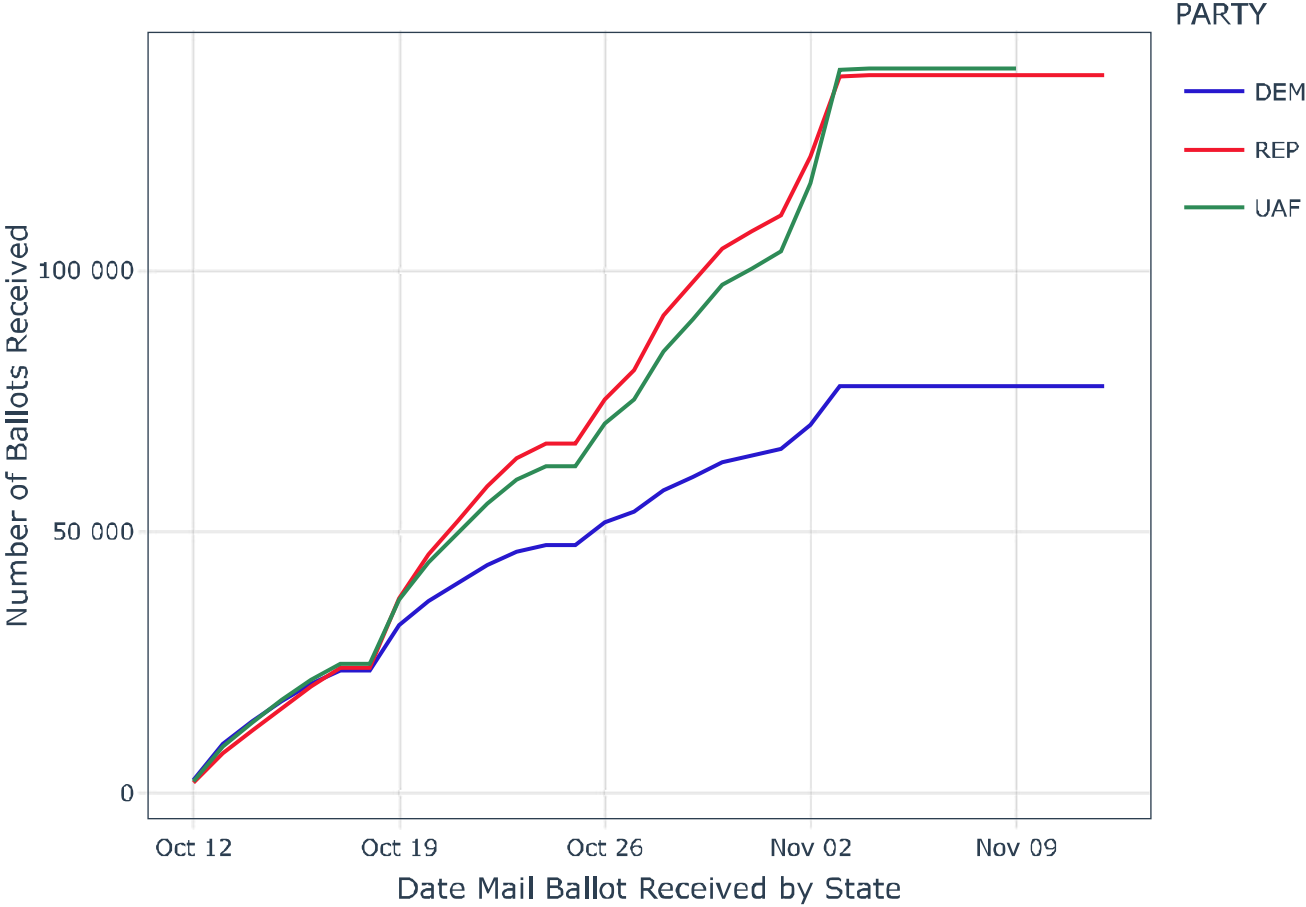
Plotting Count of Affiliated Party Ballots by Date Received - El Paso County

Interesting Note: UAF ballots overtake REP ballots in total ballots received day of election

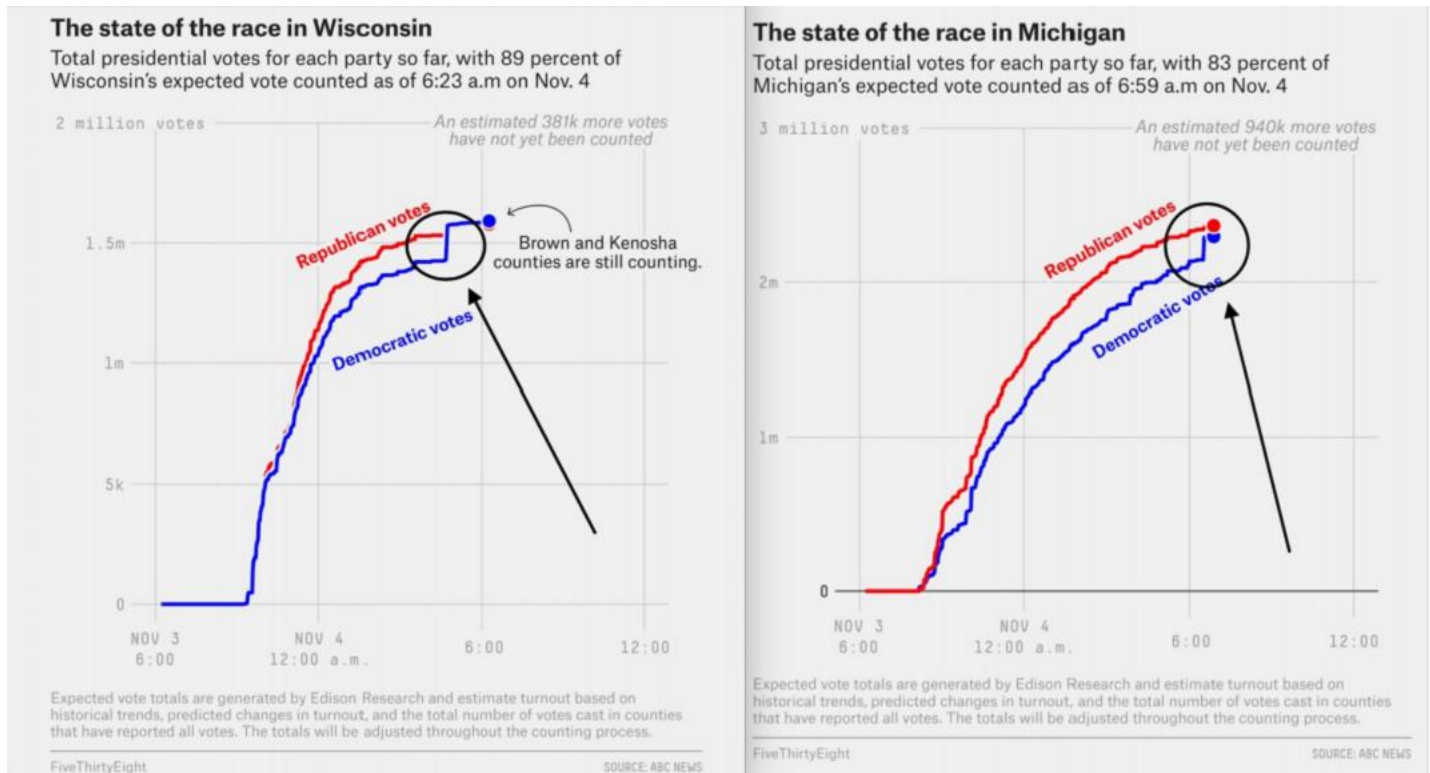




El Paso County Cumulative Votes by Party Affiliation

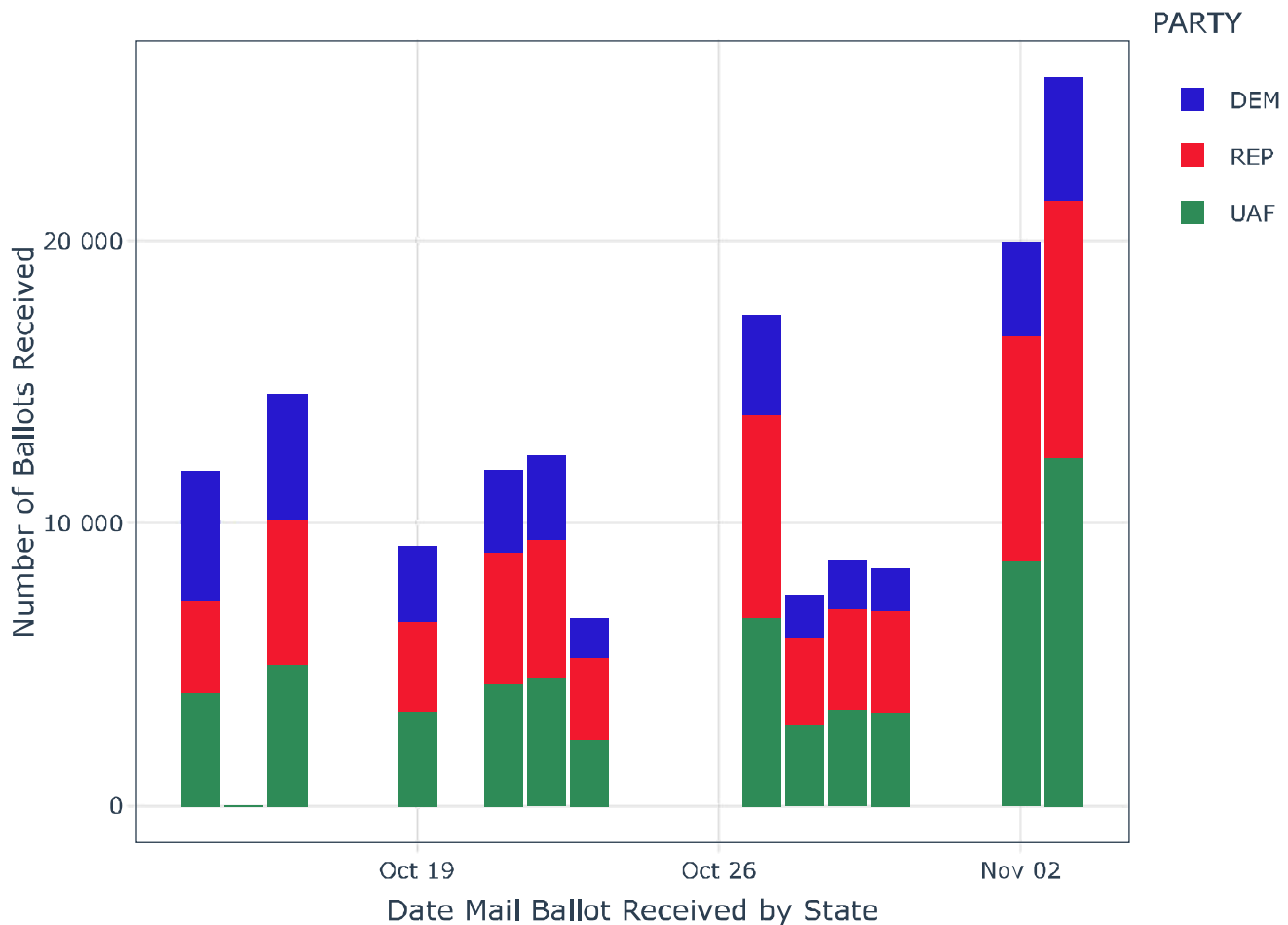


Similar “F” pattern found in the WI and MI races

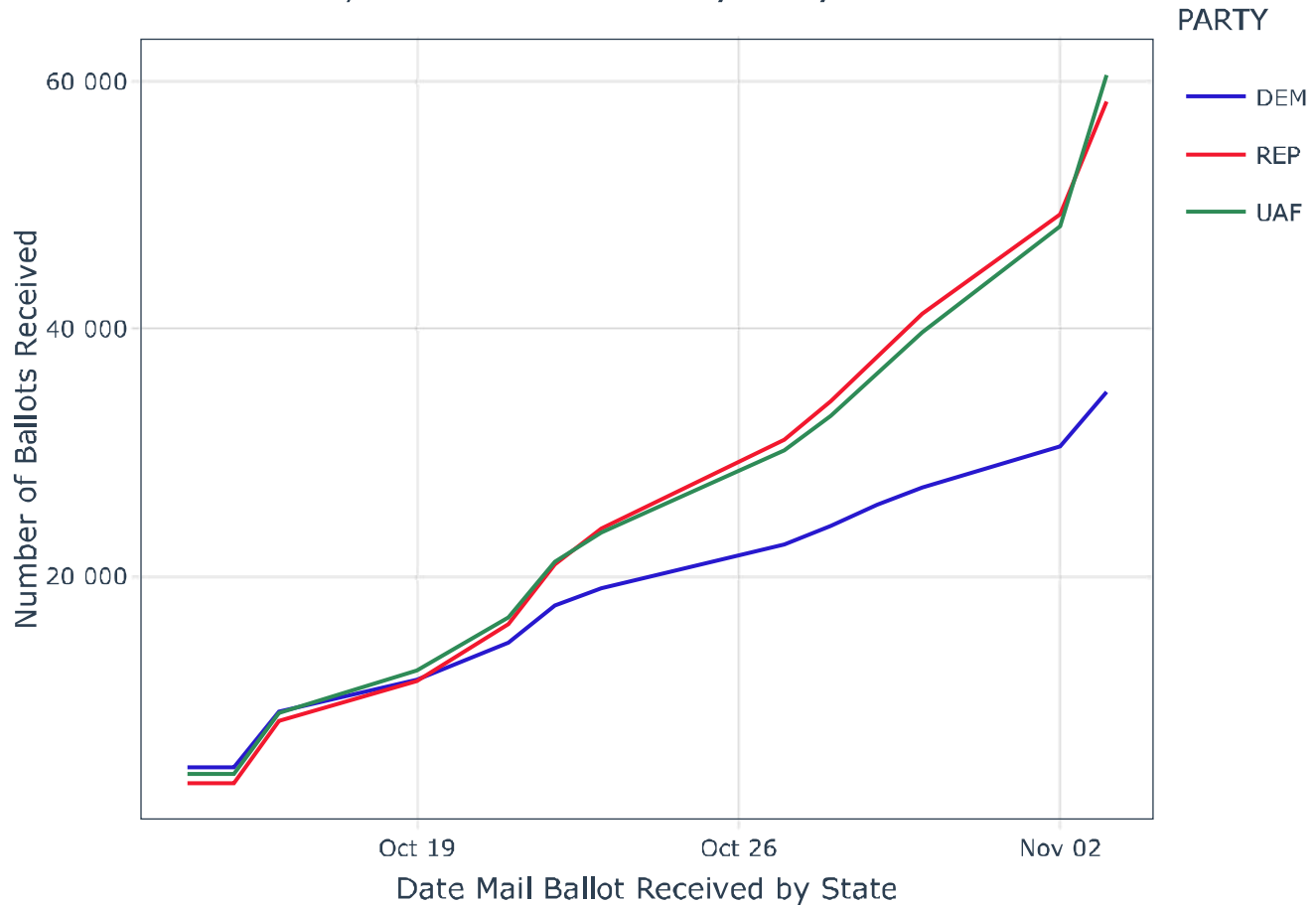


Plotting Count of Affiliated Party Ballots by Date Received - Weld

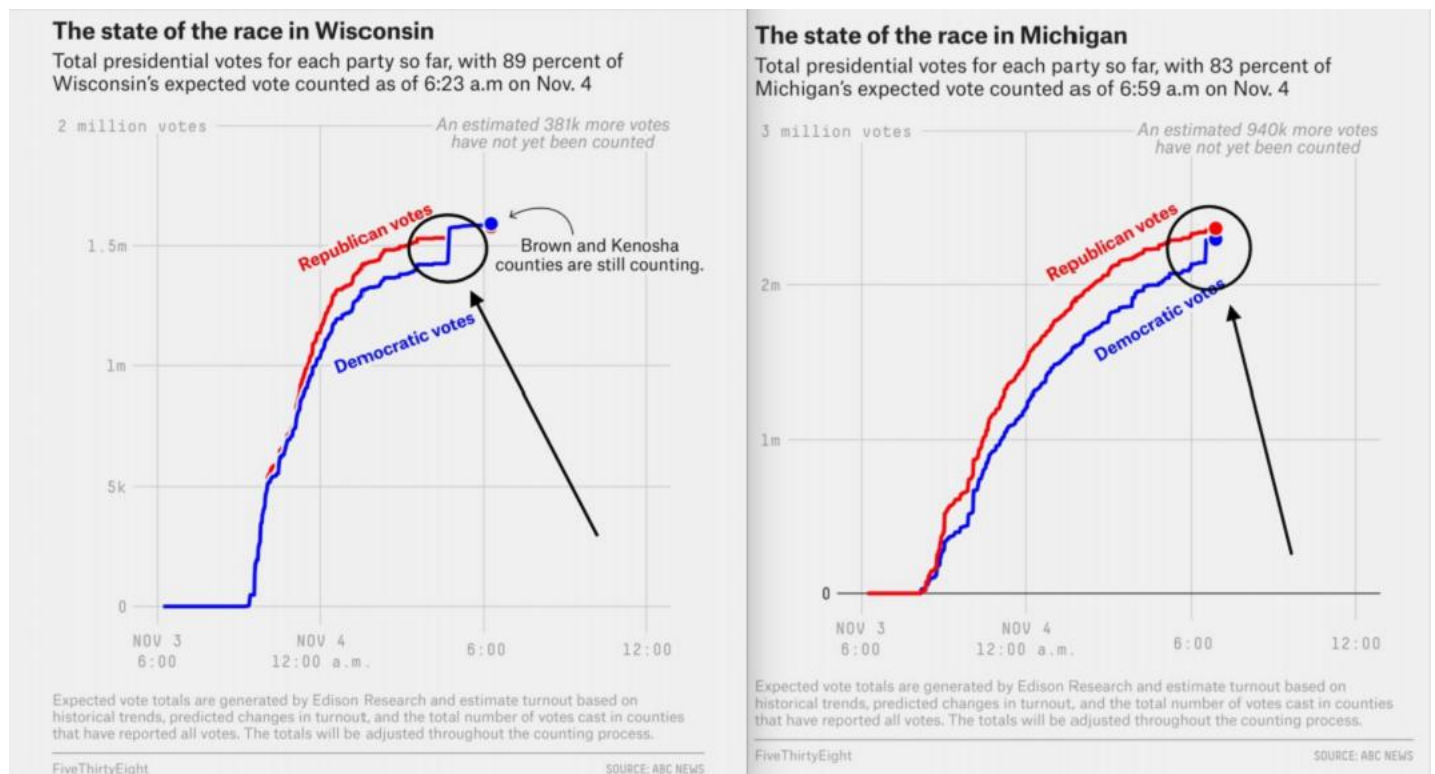
Interesting Note: UAF ballots overtake REP ballots in total ballots received day of election (same as El Paso county)



Weld County Cumulative Votes by Party Affiliation

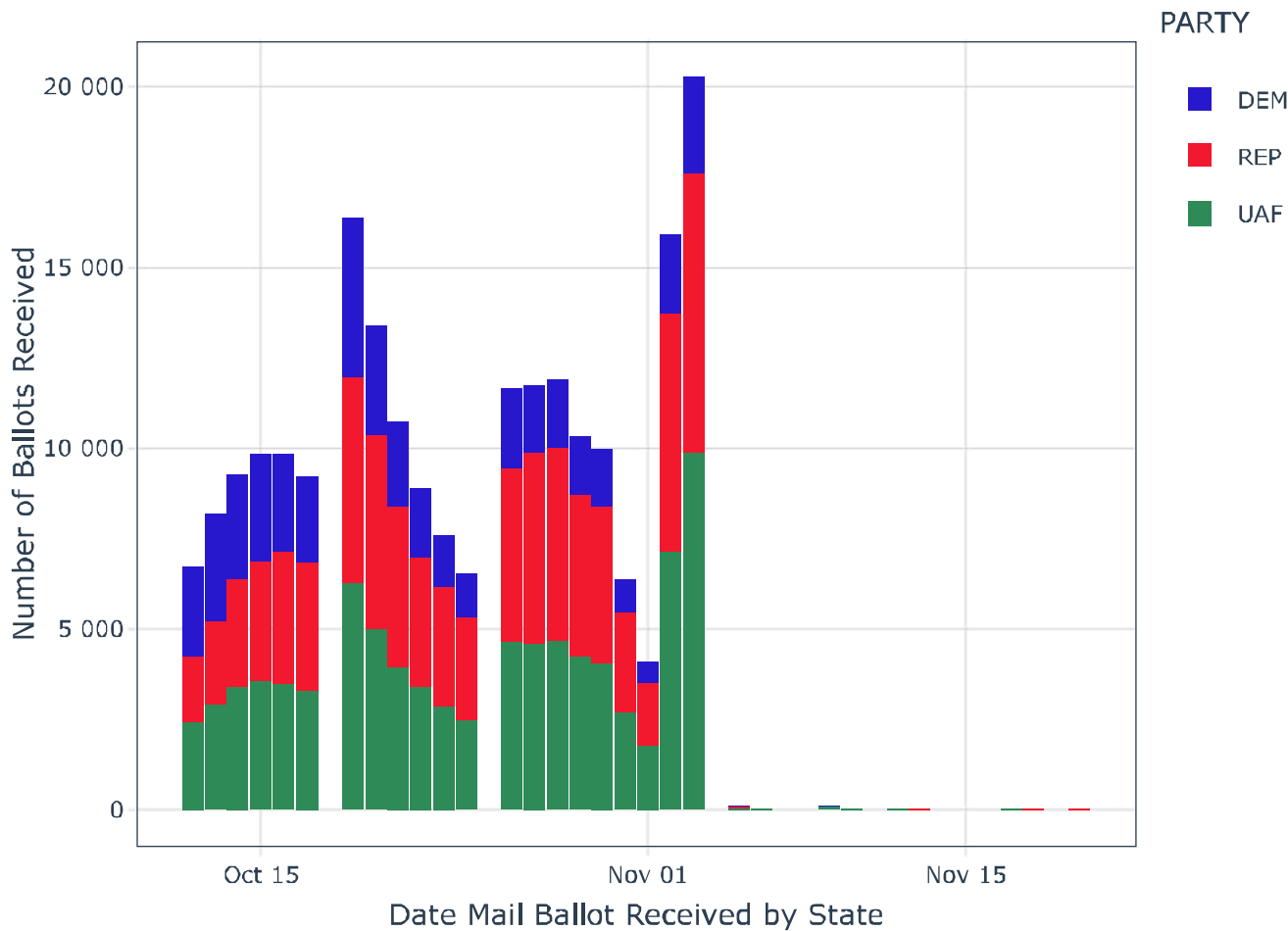


Similar “F” pattern found in the WI and MI races

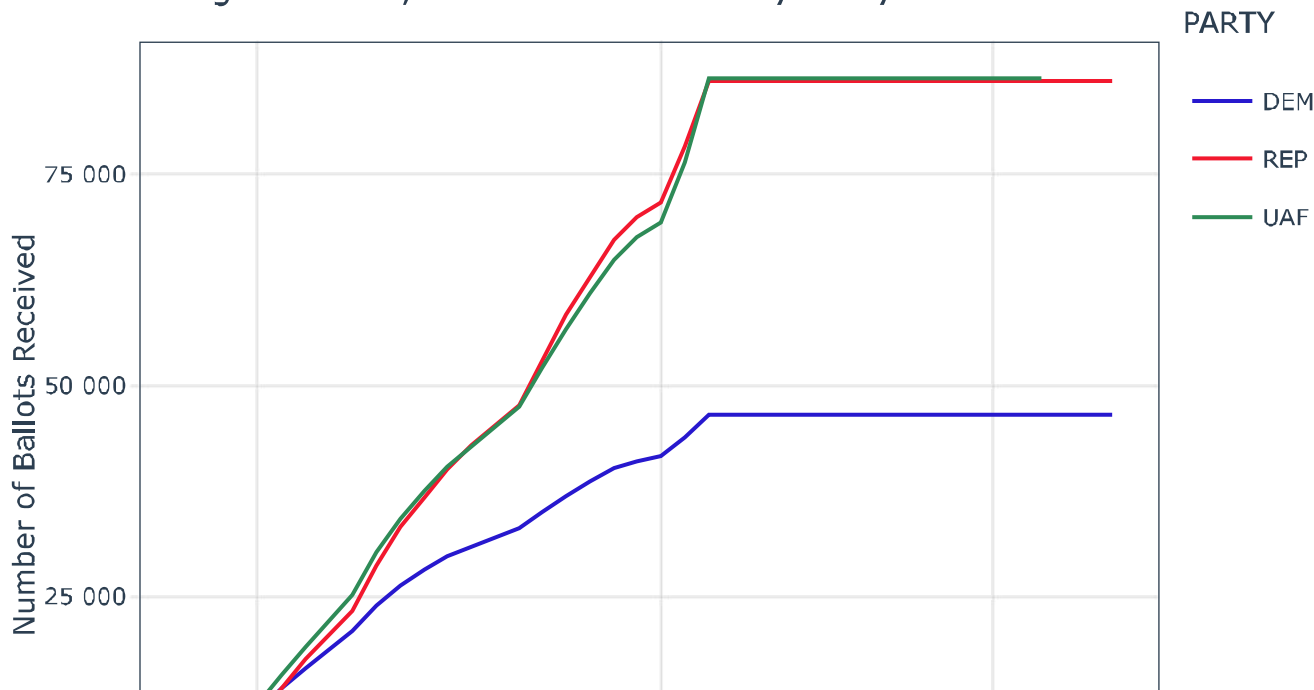


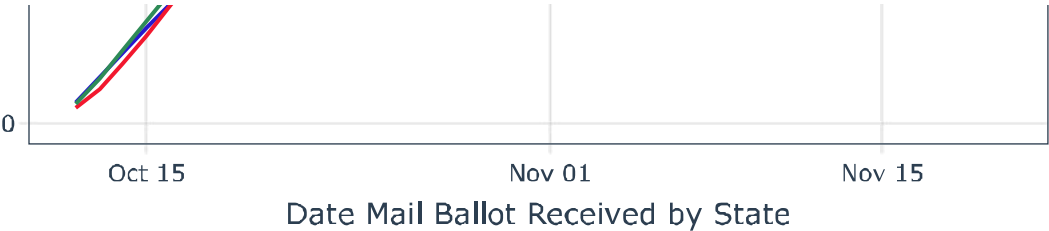
Plotting Count of Affiliated Party Ballots by Date Received - Douglas

Interesting Note: UAF ballots overtake REP ballots in total ballots received day of election (same as El Paso and Weld county). UAF voters seem to mail their ballots on the same day to arrive and be counted on election day

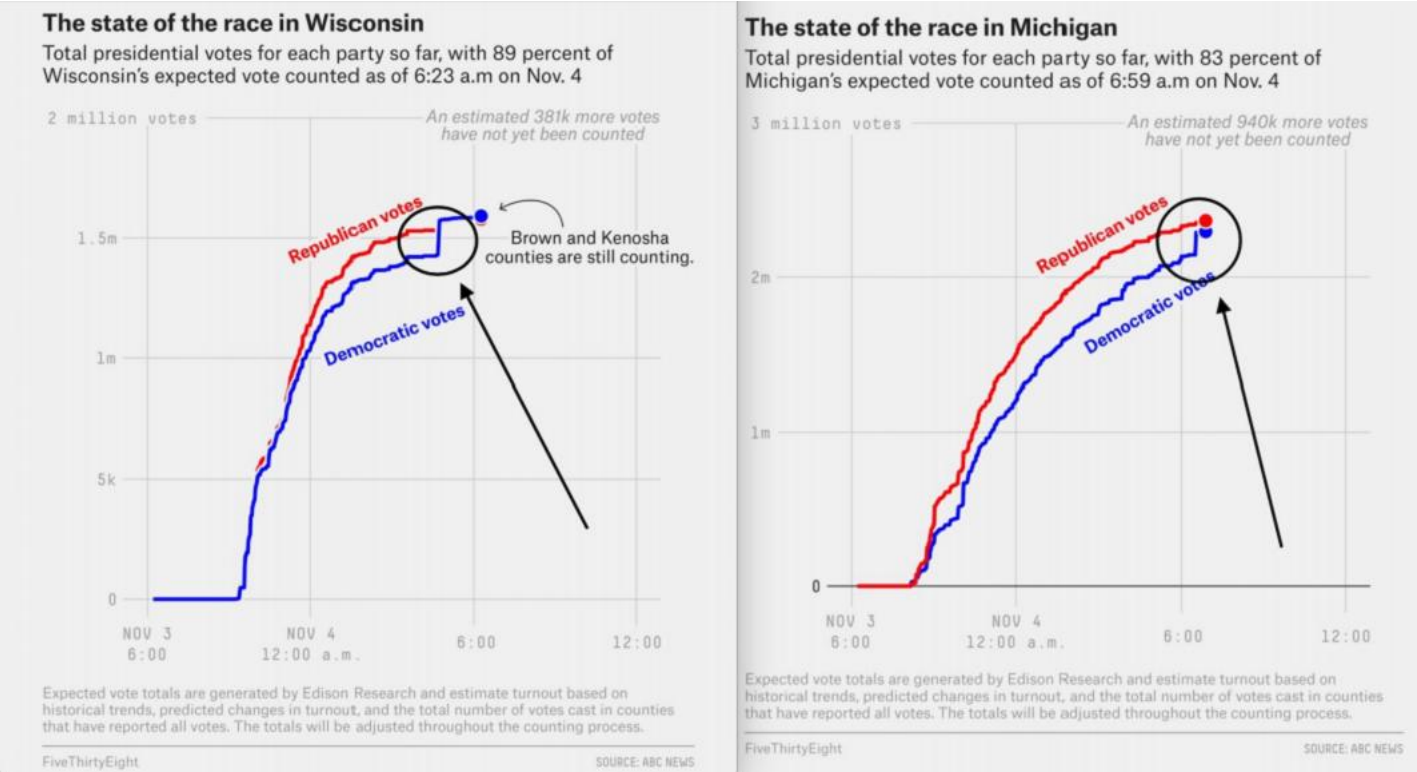


Douglas County Cumulative Votes by Party Affiliation



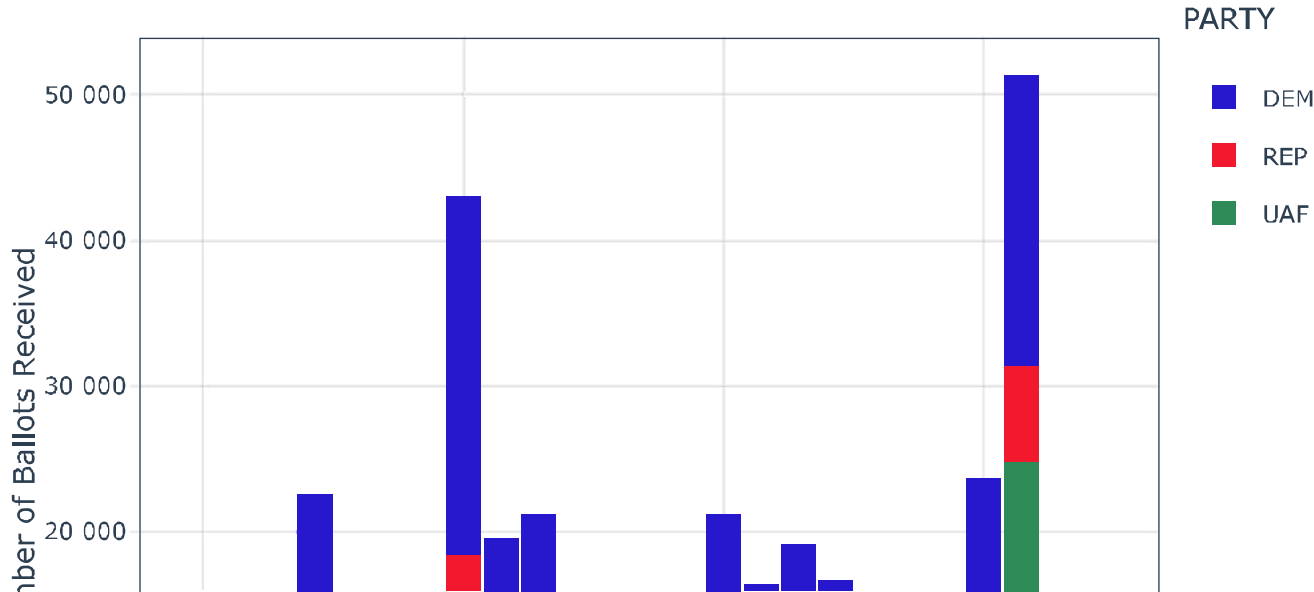


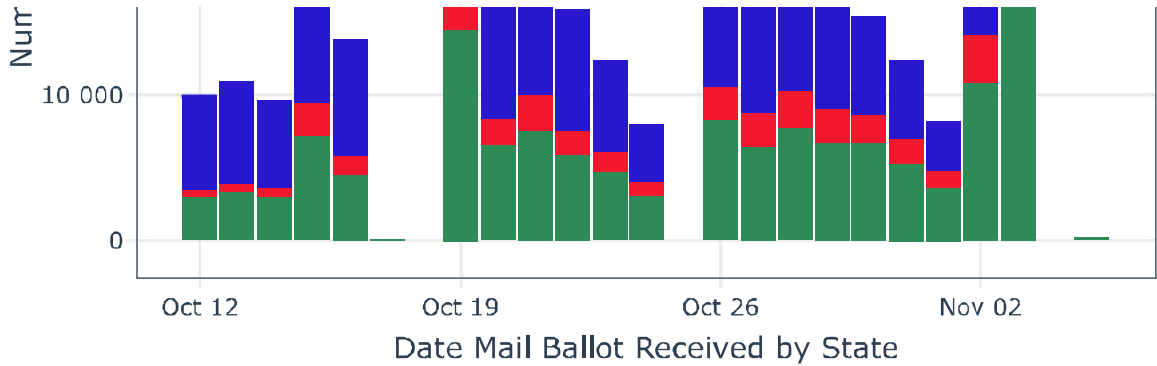
Similar “F” pattern found in the WI and MI races



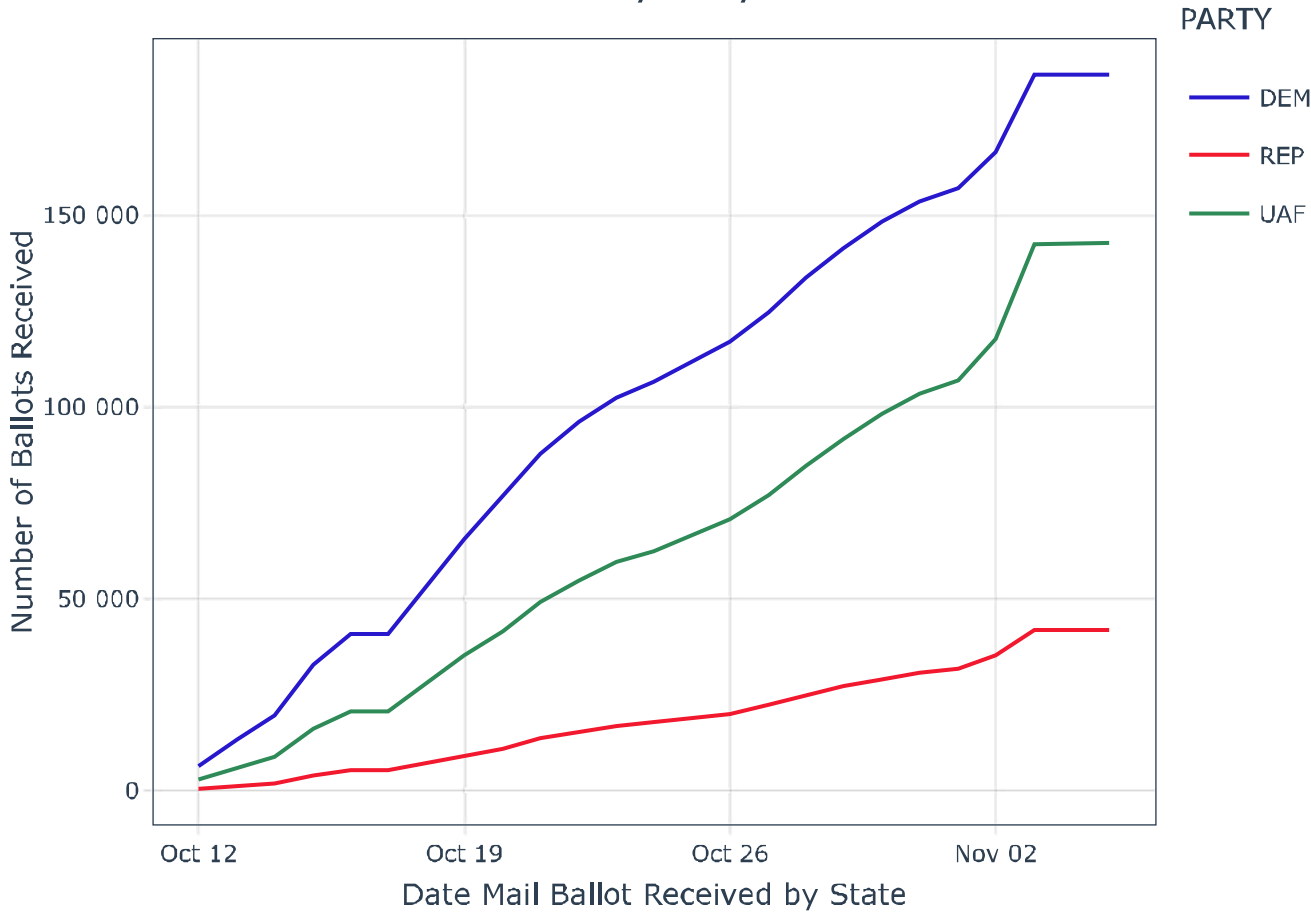
Plotting Count of Affiliated Party Ballots by Date Received - Denver

Interesting Note: Didn't see UAF ballots overtake DEM ballots in total ballots received day of election like we saw with REP ballots in El Paso, Weld, and Douglas counties



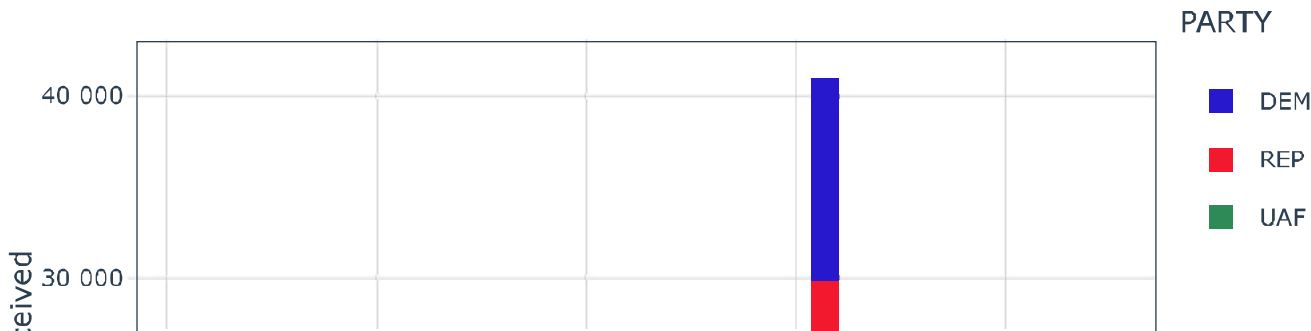


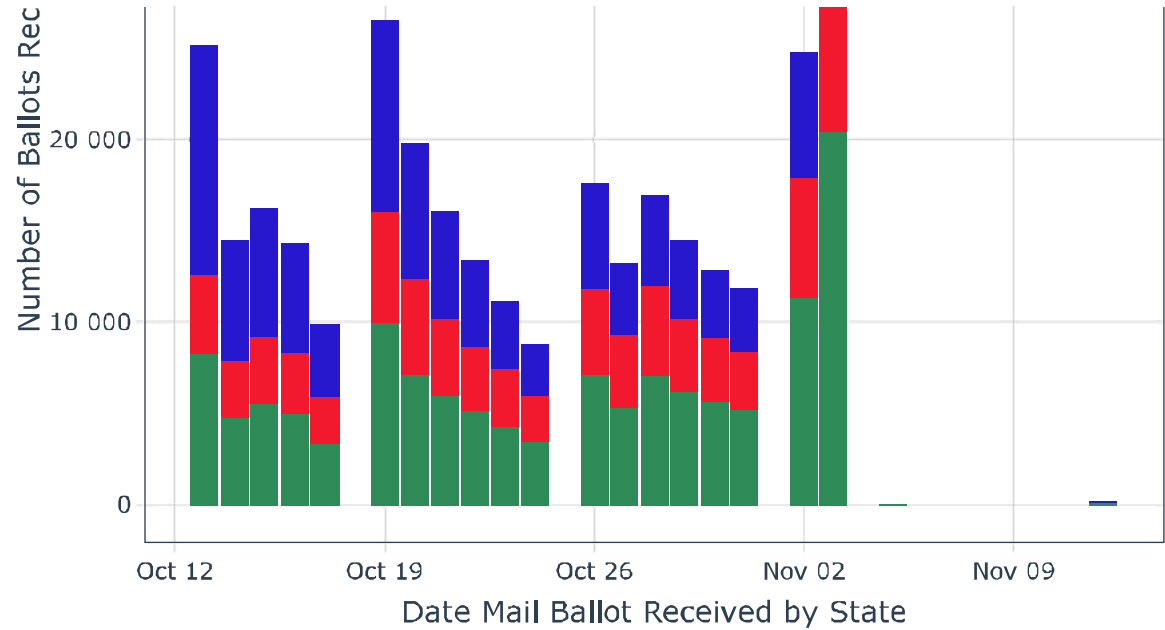
Denver Cumulative Votes by Party Affiliation



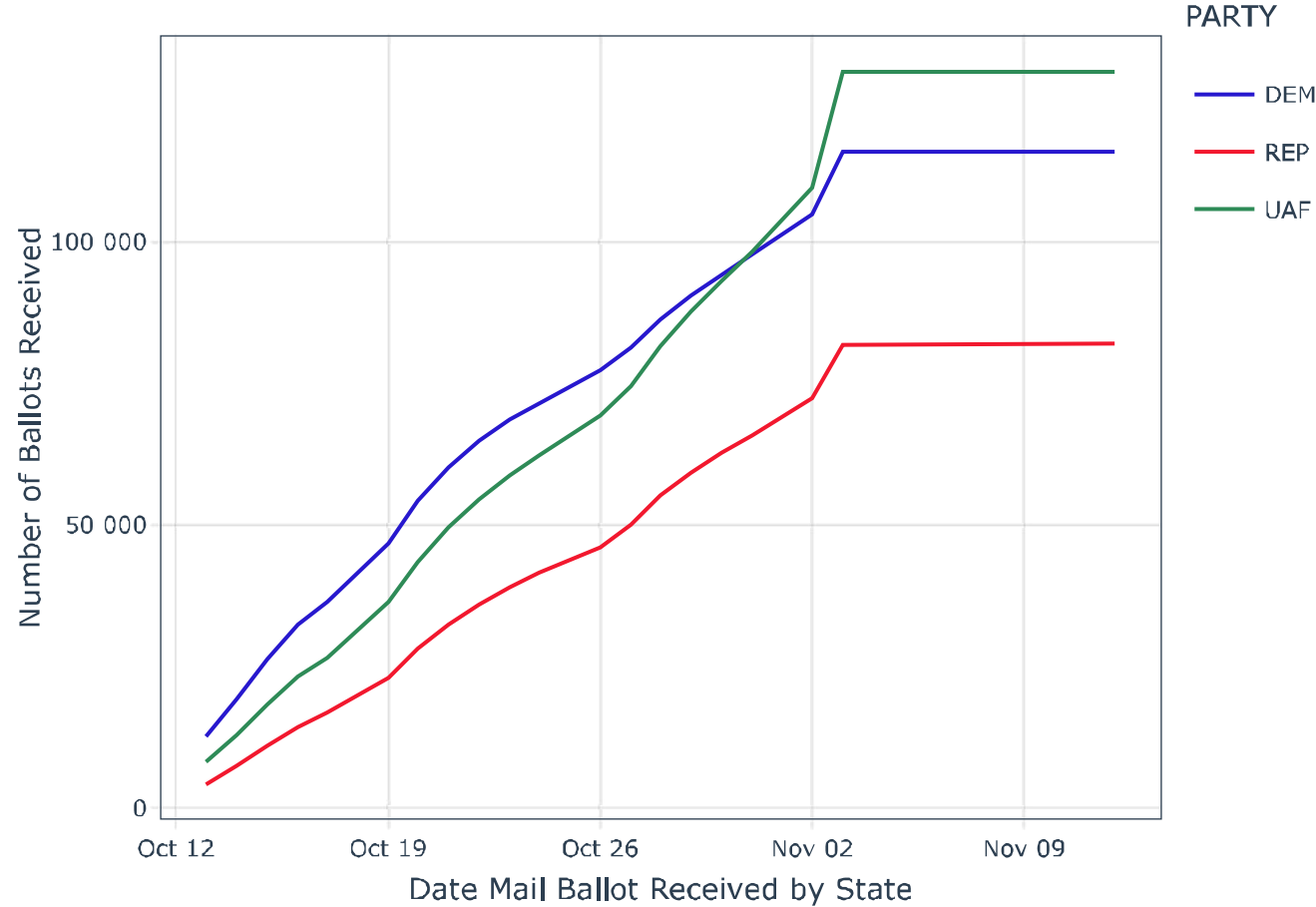
Plotting Count of Affiliated Party Ballots by Date Received - Arapahoe

Interesting Note: Didn't see UAF ballots overtake DEM ballots in total ballots received day of election like we saw with REP ballots in El Paso, Weld, and Douglas counties. They had overtaken the ballots previously.



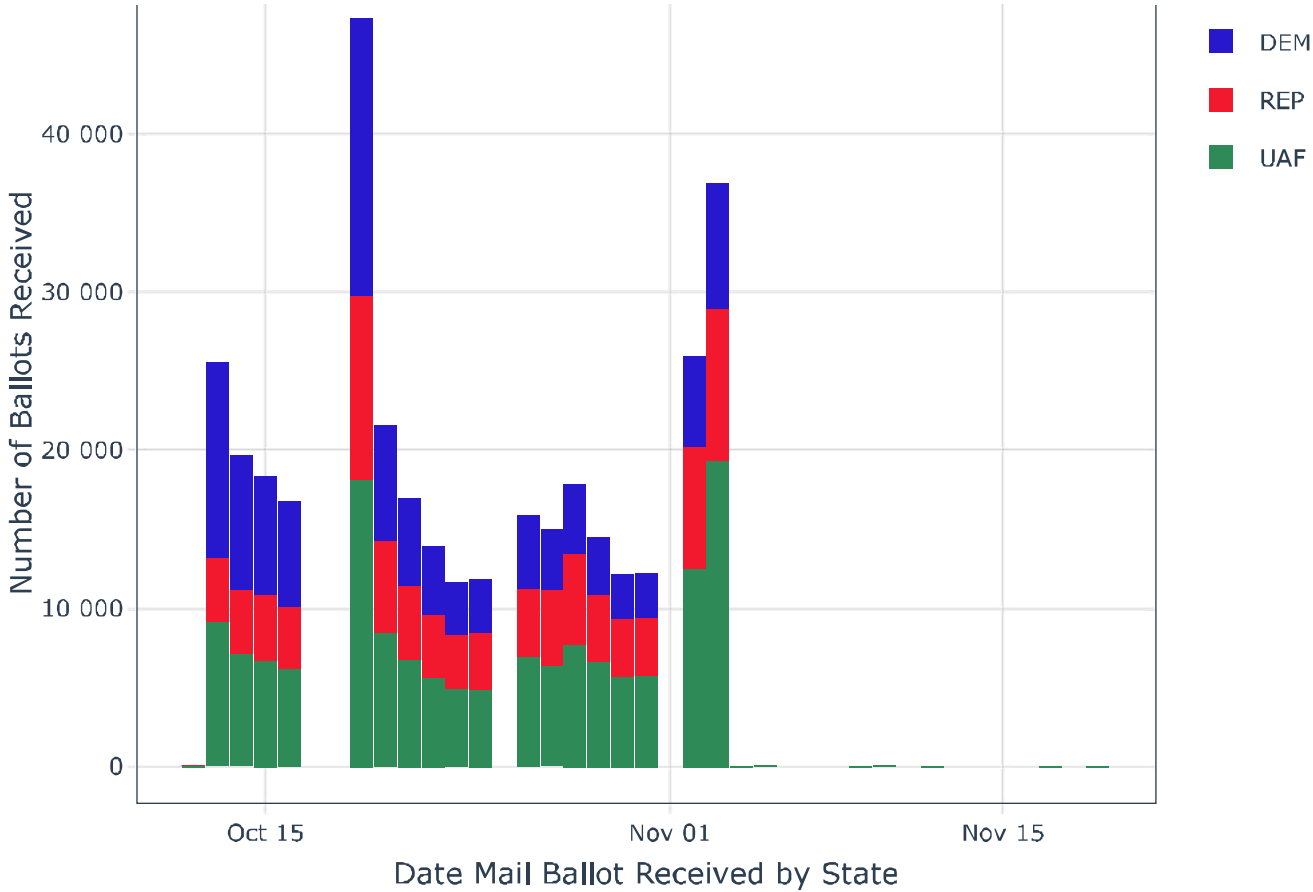


Arapahoe Cumulative Votes by Party Affiliation

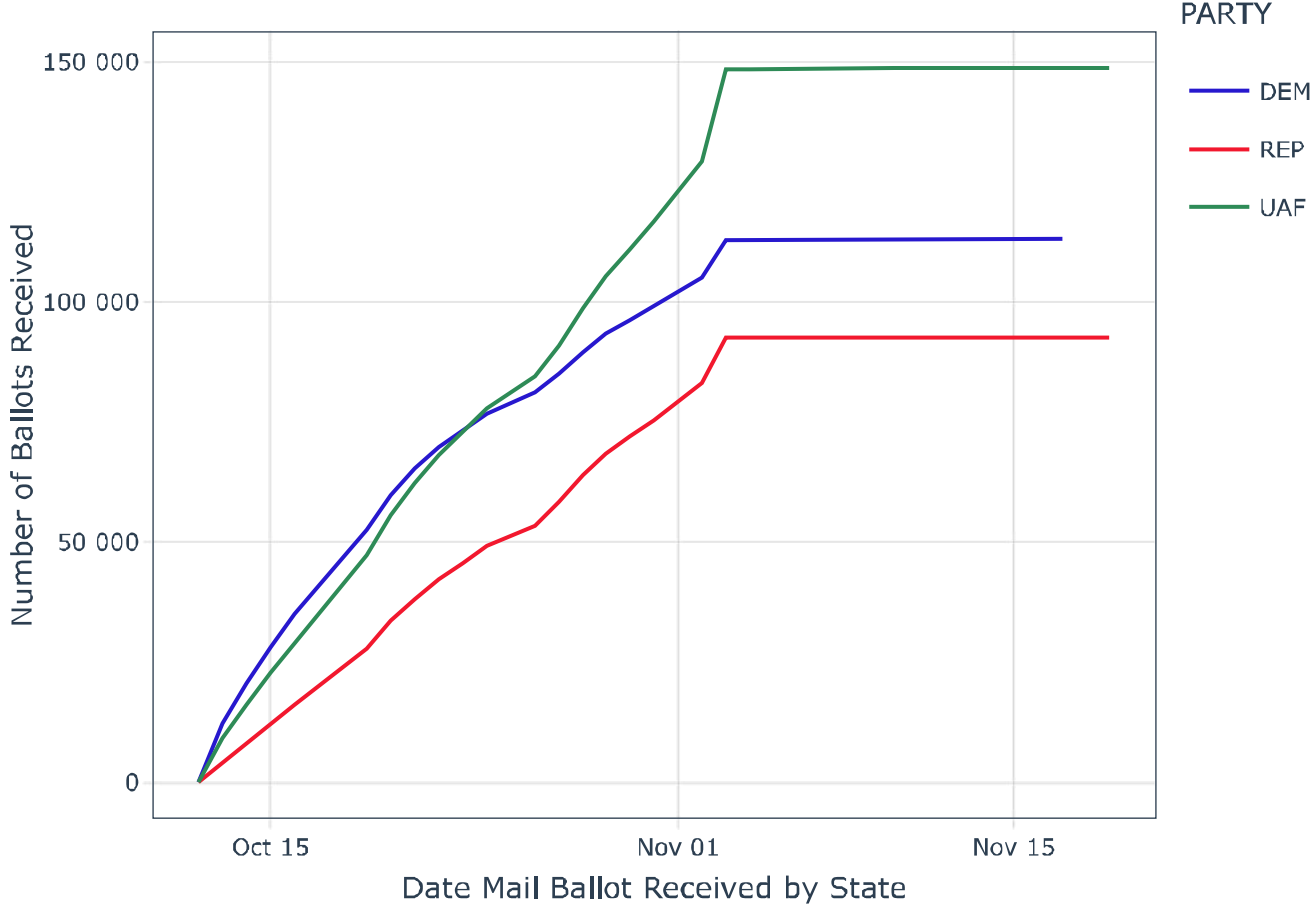


Plotting Count of Affiliated Party Ballots by Date Received - Jefferson

Interesting Note: Didn't see UAF ballots overtake DEM ballots in total ballots received day of election like we saw with REP ballots in El Paso, Weld, and Douglas counties. They had overtaken the ballots previously.

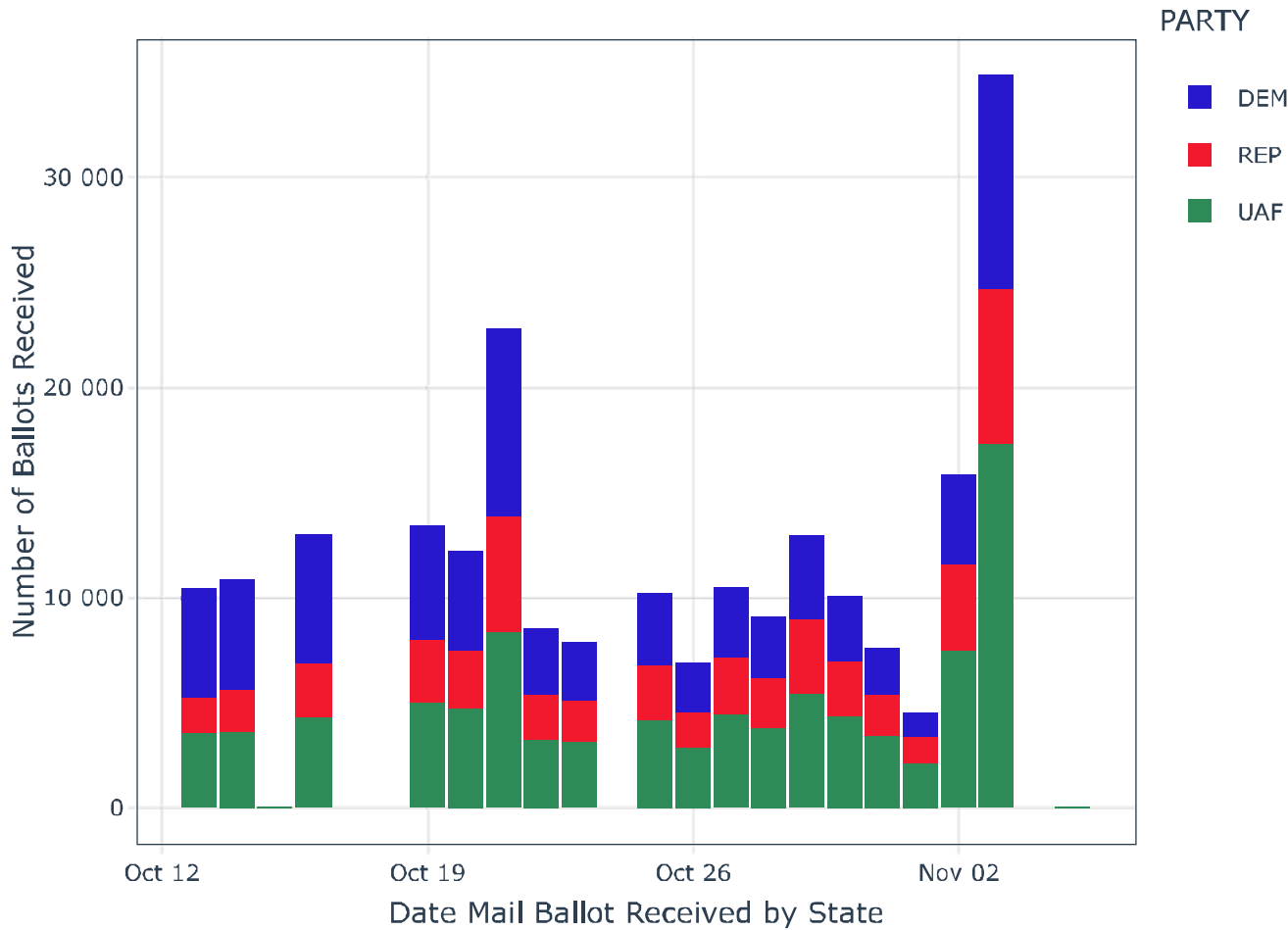


Jefferson Cumulative Votes by Party Affiliation



Plotting Count of Affiliated Party Ballots by Date Received - Adams

Interesting Note: Didn't see UAF ballots overtake DEM ballots in total ballots received day of election like we saw with REP ballots in El Paso, Weld, and Douglas counties. They had overtaken the ballots previously.



Adams Cumulative Votes by Party Affiliation

