

Ballot Style Samples

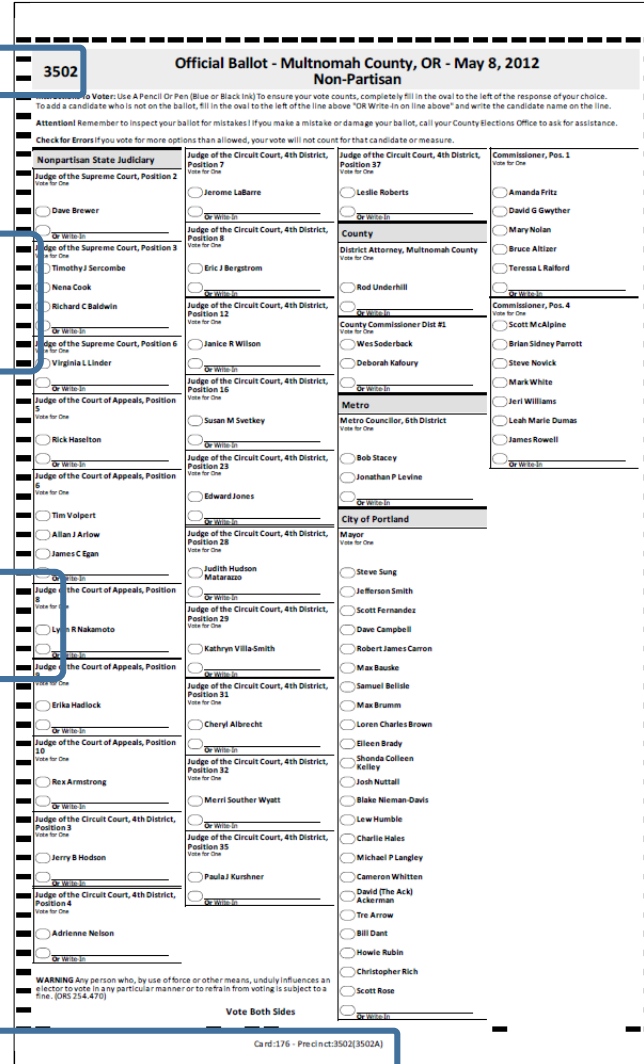
ClearDesign™: Ballot Design Elements

Precinct ID

¼" timing mark spacing enables greater contest density. Saves paper.

Flexible oval placement left, right or side-by-side

Card ID / Precinct



3502

Official Ballot - Multnomah County, OR - May 8, 2012
Non-Partisan

Instructions: Use a Pencil Or Pen (Blue or Black Ink) To ensure your vote counts, completely fill in the oval to the left of the response of your choice. To add a candidate who is not on the ballot, fill in the oval to the left of the line above "OR Write-In" and write the candidate name on the line.

Attention! Remember to inspect your ballot for mistakes! If you make a mistake or damage your ballot, call your County Elections Office to ask for assistance.

Check for Errors: If you vote for more options than allowed, your vote will not count for that candidate or measure.

Nonpartisan State Judiciary

Judge of the Supreme Court, Position 2
Vote for One

☐ Dave Brewer

☐ Timothy J. Sercombe

☐ Nena Cook

☐ Richard C. Baldwin

☐ Virginia L. Linder

Judge of the Supreme Court, Position 3
Vote for One

☐ Eric J. Bergstrom

☐ Janice R. Wilson

Judge of the Supreme Court, Position 4
Vote for One

☐ Susan M. Svetkey

Judge of the Court of Appeals, Position 5
Vote for One

☐ Rick Haselton

Judge of the Court of Appeals, Position 6
Vote for One

☐ Tim Volpert

☐ Allan J. Arlow

☐ James C. Egan

Judge of the Court of Appeals, Position 7
Vote for One

☐ Lynn R. Nakamoto

Judge of the Court of Appeals, Position 8
Vote for One

☐ Erika Hadlock

Judge of the Court of Appeals, Position 9
Vote for One

☐ Rex Armstrong

Judge of the Court of Appeals, Position 10
Vote for One

☐ Jerry B. Hodson

Judge of the Court of Appeals, Position 11
Vote for One

☐ Adrienne Nelson

Judge of the Circuit Court, 4th District, Position 7
Vote for One

☐ Jerome LaBarre

Judge of the Circuit Court, 4th District, Position 8
Vote for One

☐ Eric J. Bergstrom

Judge of the Circuit Court, 4th District, Position 12
Vote for One

☐ Janice R. Wilson

Judge of the Circuit Court, 4th District, Position 15
Vote for One

☐ Susan M. Svetkey

Judge of the Circuit Court, 4th District, Position 18
Vote for One

☐ Edward Jones

Judge of the Circuit Court, 4th District, Position 28
Vote for One

☐ Judith Hudson Matarazzo

Judge of the Circuit Court, 4th District, Position 29
Vote for One

☐ Kathryn Villa Smith

Judge of the Circuit Court, 4th District, Position 31
Vote for One

☐ Cheryl Albrecht

Judge of the Circuit Court, 4th District, Position 32
Vote for One

☐ Merri Souther Wyatt

Judge of the Circuit Court, 4th District, Position 35
Vote for One

☐ Paul J. Kurnshner

Judge of the Circuit Court, 4th District, Position 4
Vote for One

☐ Adrienne Nelson

County

District Attorney, Multnomah County
Vote for One

☐ Rod Underhill

County Commissioner Dist #1
Vote for One

☐ Wes Soderback

☐ Deborah Kalloury

Metro

Metro Councilor, 6th District
Vote for One

☐ Bob Staray

☐ Jonathan P. Levine

City of Portland

Mayor
Vote for One

☐ Steve Sung

☐ Jefferson Smith

☐ Scott Fernandez

☐ Dave Campbell

☐ Robert James Carron

☐ Max Baucke

☐ Samuel Bellile

☐ Max Brumm

☐ Loren Charles Brown

☐ Eileen Brady

☐ Shonda Colleen Kelley

☐ Josh Nuttall

☐ Blake Nieman-Davis

☐ Lew Humble

☐ Charlie Hales

☐ Michael P. Langley

☐ Cameron Whitten

☐ David (The Ack) Ackerman

☐ Tre Arrow

☐ Bill Dant

☐ Howie Rubin

☐ Christopher Rich

☐ Scott Rose

Commissioner, Pos. 1
Vote for One

☐ Amanda Fritz

☐ David G. Gwyther

☐ Mary Nolan

☐ Bruce Altizer

☐ Teresa L. Railroad

Commissioner, Pos. 4
Vote for One

☐ Scott McAlpine

☐ Brian Sidney Parrott

☐ Steve Novick

☐ Mark White

☐ Jeri Williams

☐ Leah Marie Dumas

☐ James Rowell

Vote Both Sides

Card:176 - Precinct:3502(3502A)

14 inches

8 ½ inches

General Election – Showing Split Precincts

3304 Official Ballot - Multnomah County, OR - November 6, 2012

National

United States President and Vice President

Nonpartisan State

State Measures

Nonpartisan State Judiciary

West Multnomah Soil and Water Conservation District

State Representative, 13th District

Vote Both Sides

3304 Official Ballot - Multnomah County, OR - November 6, 2012

National

United States President and Vice President

Nonpartisan State

State Measures

Nonpartisan State Judiciary

West Multnomah Soil and Water Conservation District

State Representative, 13th District

Vote Both Sides

3304 Official Ballot - Multnomah County, OR - November 6, 2012

National

United States President and Vice President

Nonpartisan State

State Measures

Nonpartisan State Judiciary

West Multnomah Soil and Water Conservation District

State Representative, 13th District

Vote Both Sides

3304 Official Ballot - Multnomah County, OR - November 6, 2012

National

United States President and Vice President

Nonpartisan State

State Measures

Nonpartisan State Judiciary

West Multnomah Soil and Water Conservation District

State Representative, 13th District

Vote Both Sides

Card:1534 - Precinct:3304(3304A)

Card:1535 - Precinct:3304(3304B)

Primary Election - Showing Party Affiliation Splits

Nonaffiliated

5106
Unaffiliated

Instructions To Voter: Use A Pencil Or Pen (Blue or Black Ink) To ensure your vote counts, completely fill in the oval to the left of the response of your choice. To add a candidate who is not on the ballot, fill in the oval to the left of the space provided above and write the candidate name on the line.

Attendee: Member to inspect your ballot for mistakes? If you make a mistake or damage your ballot, call your County Election Office to ask for assistance.

Check for Errors: If you vote for more options than allowed, your vote will not count for that candidate or measure.

State	Judge of the Circuit Court, 4th District, Position 3	Judge of the Circuit Court, 4th District, Position 32	County Questions or Issues
Secretary of State <input type="radio"/> Steve Tate	<input type="radio"/> Jerry R Hudson	<input type="radio"/> Marri Beuher Wyatt	26-125, local library funding: continues local option levy at current rate, , Multnomah County libraries serve every neighborhood across the county with 18 local branches. Two thirds of library funding comes from a voter-approved levy. Renewal of the current levy will keep libraries open and maintain a majority of hours and services. If not renewed, most libraries will close, others will be open fewer hours, and library services will be greatly reduced.
<input type="radio"/> Kristie Baehler	<input type="radio"/> Adrienne Nelson	<input type="radio"/> Paula J. Kurnher	
Nonpartisan State Judiciary Judge of the Supreme Court, Position 2 <input type="radio"/> Steve Tate	<input type="radio"/> Adrienne Nelson	<input type="radio"/> Paula J. Kurnher	
<input type="radio"/> Dave Brower	<input type="radio"/> Jerome LaBare	<input type="radio"/> Leslie Roberts	Renewing the library levy will: Continue programs such as: story hours for babies and toddlers, after-school homework help for school students; summer reading programs for teens and more;
<input type="radio"/> Judge of the Supreme Court, Position 3 <input type="radio"/> Steve Tate	<input type="radio"/> Eric J Bergstrom	<input type="radio"/> County Attorney, Multnomah County <input type="radio"/> Steve Tate	Help teachers and students use library resources; provide homework helpers to assist children with school work.
<input type="radio"/> Timothy J. Serscombe	<input type="radio"/> Judge of the Circuit Court, 4th District, Position 12 <input type="radio"/> Steve Tate	<input type="radio"/> And Underhill	Update books and materials; maintain free access to information;
<input type="radio"/> Nancy Cook	<input type="radio"/> Judge of the Circuit Court, 4th District, Position 12 <input type="radio"/> Steve Tate	<input type="radio"/> County Commissioner Dist B4 <input type="radio"/> Steve Tate	Continue book delivery to homebound senior citizens and retirement home residents.
<input type="radio"/> Richard C. Baldwin	<input type="radio"/> Janice R Wilson	<input type="radio"/> Diane McKiel	Fund hours and services at Central and neighborhood libraries.
<input type="radio"/> Judge of the Court of Appeals, Position 1 <input type="radio"/> Steve Tate	<input type="radio"/> Scott M Bentley	<input type="radio"/> County Commissioner Dist B4 <input type="radio"/> Steve Tate	This levy does not raise property taxes. It continues the same rate of the previous library levy approved by voters. Estimated cost for the typical household will remain about \$13 per month for three years.
<input type="radio"/> Black Hamilton	<input type="radio"/> Judge of the Circuit Court, 4th District, Position 15 <input type="radio"/> Steve Tate	<input type="radio"/> County Commissioner Dist B4 <input type="radio"/> Steve Tate	The levy raises approximately \$33.6 million in 2012-13; \$34.5 million in 2013-14; \$36.5 million in 2014-15. The estimated tax cost for this measure is an ESTIMATE ONLY based on the best information available from the county assessor at the time of estimate.
<input type="radio"/> Judge of the Court of Appeals, Position 2 <input type="radio"/> Steve Tate	<input type="radio"/> Judge of the Circuit Court, 4th District, Position 23 <input type="radio"/> Steve Tate	<input type="radio"/> County Commissioner Dist B4 <input type="radio"/> Steve Tate	<input type="radio"/> Yes <input type="radio"/> No
<input type="radio"/> Tim Volpert	<input type="radio"/> Edward Jones	<input type="radio"/> County Commissioner Dist B4 <input type="radio"/> Steve Tate	
<input type="radio"/> Allan Arlo	<input type="radio"/> Judge of the Circuit Court, 4th District, Position 28 <input type="radio"/> Steve Tate	<input type="radio"/> County Commissioner Dist B4 <input type="radio"/> Steve Tate	
<input type="radio"/> James Egan	<input type="radio"/> Jeffith Hudson Matrazzo	<input type="radio"/> County Commissioner Dist B4 <input type="radio"/> Steve Tate	
<input type="radio"/> Judge of the Court of Appeals, Position 3 <input type="radio"/> Steve Tate	<input type="radio"/> Judge of the Circuit Court, 4th District, Position 29 <input type="radio"/> Steve Tate	<input type="radio"/> County Commissioner Dist B4 <input type="radio"/> Steve Tate	
<input type="radio"/> Lynn R Nakamoto	<input type="radio"/> Kathryn Villa-Smith	<input type="radio"/> County Commissioner Dist B4 <input type="radio"/> Steve Tate	
<input type="radio"/> Judge of the Court of Appeals, Position 4 <input type="radio"/> Steve Tate	<input type="radio"/> Judge of the Circuit Court, 4th District, Position 31 <input type="radio"/> Steve Tate	<input type="radio"/> County Commissioner Dist B4 <input type="radio"/> Steve Tate	
<input type="radio"/> Erica Hadwick	<input type="radio"/> Cheryl Abbrecht	<input type="radio"/> County Commissioner Dist B4 <input type="radio"/> Steve Tate	
<input type="radio"/> Judge of the Court of Appeals, Position 5 <input type="radio"/> Steve Tate	<input type="radio"/> County Commissioner Dist B4 <input type="radio"/> Steve Tate	<input type="radio"/> County Commissioner Dist B4 <input type="radio"/> Steve Tate	
<input type="radio"/> Rex Armstrong	<input type="radio"/> County Commissioner Dist B4 <input type="radio"/> Steve Tate	<input type="radio"/> County Commissioner Dist B4 <input type="radio"/> Steve Tate	

WARNING Any person who, by use of force or other means, unduly influences an elector to vote in any particular manner or to refrain from voting is subject to a fine. (ORS 254.470)

Vote Both Sides

Non-Partisan

5106

Official Ballot - Multnomah County, OR - May 8, 2012

Non-partisan

Vote now, completely

Instructions To Voters: Use a Pencil Or Pen (Blue or Black Ink) To ensure your vote counts, please fill in the oval to the left of the response of your choice. To add a candidate who is not on the ballot, fill in the oval to the left of the space below the "County Questions or Issues" section above and write the candidate name on the line.

Attention! Remember to inspect your ballot for mistakes! You have a mistake or damage your ballot, call your County Elections Office to ask for assistance.

Check for Errors! If you vote for more options than allowed, your vote will not count for that candidate or measure.

Nonpartisan State Judiciary	Judge of the Circuit Court, 4th District, Position 7	Judge of the Circuit Court, 4th District, Position 12	County Questions or Issues
<p>Judge of the Supreme Court, Position 2 Vote for One</p> <p><input type="radio"/> Dave Brewer</p> <p><input type="radio"/> Timothy J. Sercombe</p> <p><input type="radio"/> Mena Cook</p> <p><input type="radio"/> Richard C. Baldwin</p> <p>OR Write In:</p> <p>Judge of the Supreme Court, Position 6 Vote for One</p> <p><input type="radio"/> Virginia Linder</p> <p>Judge of the Court of Appeals, Position 5 Vote for One</p> <p><input type="radio"/> Rick Hamilton</p> <p>OR Write In:</p> <p>Judge of the Court of Appeals, Position 10 Vote for One</p> <p><input type="radio"/> Tim Volpert</p> <p><input type="radio"/> Allan A. Cogan</p> <p><input type="radio"/> James J. Lewis</p> <p>Judge of the Court of Appeals, Position 14 Vote for One</p> <p><input type="radio"/> Lynn R. Nakamoto</p> <p>Judge of the Court of Appeals, Position 18 Vote for One</p> <p><input type="radio"/> Mike Hadlock</p> <p>Judge of the Court of Appeals, Position 22 Vote for One</p> <p><input type="radio"/> Rex Armstrong</p> <p>Judge of the Circuit Court, 4th District, Position 3 Vote for One</p> <p><input type="radio"/> Jerry Haddon</p> <p>OR Write In:</p> <p>Judge of the Circuit Court, 4th District, Position 4 Vote for One</p> <p><input type="radio"/> Adrienne Nelson</p> <p>OR Write In:</p>	<p><input type="radio"/> Jarome Labarre</p> <p>Judge of the Circuit Court, 4th District, Position 8 Vote for One</p> <p><input type="radio"/> Eric J. Bergstrom</p> <p>Judge of the Circuit Court, 4th District, Position 12 Vote for One</p> <p><input type="radio"/> Janice R. Wilson</p> <p>Judge of the Circuit Court, 4th District, Position 16 Vote for One</p> <p><input type="radio"/> Susan M. Swetley</p> <p>Judge of the Circuit Court, 4th District, Position 20 Vote for One</p> <p><input type="radio"/> Edward Jones</p> <p>Judge of the Circuit Court, 4th District, Position 24 Vote for One</p> <p><input type="radio"/> Judith Hodson</p> <p>Judge of the Circuit Court, 4th District, Position 28 Vote for One</p> <p><input type="radio"/> Kathryn Villa-Smith</p> <p>Judge of the Circuit Court, 4th District, Position 31 Vote for One</p> <p><input type="radio"/> Cheryl Albrecht</p> <p>Judge of the Circuit Court, 4th District, Position 32 Vote for One</p> <p><input type="radio"/> Merit Souther Wyatt</p> <p>Judge of the Circuit Court, 4th District, Position 35 Vote for One</p> <p><input type="radio"/> Paula J. Karsner</p> <p>OR Write In:</p>	<p><input type="radio"/> Leslie Roberts</p> <p>County District Attorney, Multnomah County Vote for One</p> <p><input type="radio"/> Rod Underhill</p> <p>County Commissioner Dist #4 Vote for One</p> <p><input type="radio"/> Diane McCall</p> <p>OR Write In:</p>	<p>26-123, Local library funding: continues local option levy at current rate,, Multnomah County libraries serve every neighborhood across the county with 18 local branches and Central Library. Two thirds of library funding comes from a voter-approved levy. Renewal of the current levy will keep libraries open and maintain a majority of hours and services. If not renewed, most libraries will close, others will be open fewer hours, and library services will be greatly reduced.</p> <p>Renewing the library levy will:</p> <p>Continue programs such as: story hours for babies and toddlers, after-school homework help for school students; summer reading programs for teens and more;</p> <p>Help teachers and students use library resources; provide homework helpers to assist children with school work.</p> <p>Update books and materials; maintain free access to information;</p> <p>Continue book delivery to homebound senior citizens and retirement home residents.</p> <p>Fund farms and services at Central and neighborhood libraries.</p> <p>This levy does not raise property taxes. It continues the same rate of the previous library levy approved by voters. Estimated cost for the typical household will remain about \$13 per month for three years.</p> <p>The levy raises approximately \$32.6 million in 2012-13; \$34.5 million in 2013-14; \$36.5 million in 2014-15. The estimated tax cost for this measure is an ESTIMATE ONLY based on the best information available from the county assessor at the time of estimate.</p> <p><input type="radio"/> Yes</p> <p><input type="radio"/> No</p>

WARNING Any person who, by use of force or other means, unduly influences an elector to vote in any particular manner or to refrain from voting is subject to a fine. (ORS 214.470)

Vote Both Sides

Democratic

5106		Official Ballot - Multnomah County, OR - May 8, 2012	
		Democratic	
<p>Instructions To Voter: Use a Pencil Or Pen (Blue or Black Ink) To ensure your vote counts, completely fill in the oval to the left of the response of your choice. To add a candidate who is not on the ballot, fill in the oval to the left of the blank space below "Write In" and write the candidate name to the right.</p> <p>Attendees Reminded to inspect your ballot for mistakes! If you make a mistake or damage your ballot, call your County Elections Office at 503-254-4370 for assistance.</p> <p>Check for Errors! You vote for more options than allowed, your vote will not count for that candidate or measure.</p>			
Federal United States President Vote for One <input type="radio"/> Barack Obama <input type="radio"/> Mitt Romney Representative in Congress, 3rd District Vote for One <input type="radio"/> Earl Blumenauer <input type="radio"/> _____ Secretary of State Vote for One <input type="radio"/> Kate Brown <input type="radio"/> Paul DeSantis Wells <input type="radio"/> _____ <input type="radio"/> Ted Wheeler Attorney General Vote for One <input type="radio"/> Dwight Holton <input type="radio"/> Ellen Rosenblum State Representative, 51st District Vote for One <input type="radio"/> Shemia Fagan <input type="radio"/> _____	Judge of the Court of Appeals, Position 10 Vote for One <input type="radio"/> Tim Volpert <input type="radio"/> Albert A'Row <input type="radio"/> James Egan Judge of the Court of Appeals, Position 6 Vote for One <input type="radio"/> Lynn R Nakamoto <input type="radio"/> _____ Judge of the Court of Appeals, Position 10 Vote for One <input type="radio"/> Erik Hadlock <input type="radio"/> _____ Judge of the Court of Appeals, Position 15 Vote for One <input type="radio"/> Rex Armstrong <input type="radio"/> _____ Judge of the Circuit Court, 4th District, Position 3 Vote for One <input type="radio"/> Jerry B Hudson <input type="radio"/> _____ Judge of the Circuit Court, 4th District, Position 7 Vote for One <input type="radio"/> Adrienne Nelson <input type="radio"/> _____	Judge of the Circuit Court, 4th District, Position 2 Vote for One <input type="radio"/> Edward Jones <input type="radio"/> _____ Judge of the Circuit Court, 4th District, Position 18 Vote for One <input type="radio"/> Judith Hudson Matsuda <input type="radio"/> _____ Judge of the Circuit Court, 4th District, Position 20 Vote for One <input type="radio"/> Kathryn Villa-Smith <input type="radio"/> _____ Judge of the Circuit Court, 4th District, Position 31 Vote for One <input type="radio"/> Cheryl Albrecht <input type="radio"/> _____ Judge of the Circuit Court, 4th District, Position 32 Vote for One <input type="radio"/> Merritt-Swartz Wyatt <input type="radio"/> _____ Judge of the Circuit Court, 4th District, Position 33 Vote for One <input type="radio"/> Paula J Kurnher <input type="radio"/> _____	County Questions or Issues 26-123, Local Library Funding: Continuing local option levy at current rate,, Multnomah County libraries serve every neighborhood across the county with 18 local branches and Central Library. Two thirds of library funding comes from a voter-approved levy. Renewal of the current levy will keep libraries open and maintain a majority of hours and services. If not renewed, most libraries will close, others will be open fewer hours, and library services will be greatly reduced. Renewing the Library levy will: <input type="checkbox"/> Continue programs such as: story hours for babies and toddlers, after-school homework help for school students; summer reading programs for teens and more; <input type="checkbox"/> Help teachers and students use library resources; provide homework helpers to assist children with school work. <input type="checkbox"/> Update books and materials; maintain free access to information; <input type="checkbox"/> Continue book delivery to homebound senior citizens and retirement home residents. Fund hours and services at Central and neighborhood libraries. This levy does not raise property taxes. It continues the same rate of the previous library revenue approved by voters. Estimated cost for the typical household will remain about \$13 per month for three years. The levy raises approximately \$32.6 million in 2012-13; \$34.5 million in 2013-14; \$36.5 million in 2014-15. The estimated tax cost for this measure is an ESTIMATE ONLY based on the best information available from the county assessor at the time of estimate. <input type="radio"/> Yes <input type="radio"/> No
Nonpartisan State Judiciary Judge of the Supreme Court, Position 2 Vote for One <input type="radio"/> Dave Brewer <input type="radio"/> _____ <input type="radio"/> Timothy J Saramba <input type="radio"/> _____ <input type="radio"/> Nance Cook <input type="radio"/> Richard C Baldwin Judge of the Supreme Court, Position 6 Vote for One <input type="radio"/> Virginia Linder <input type="radio"/> _____ Judge of the Court of Appeals, Position 5 Vote for One <input type="radio"/> Rick Hasselton <input type="radio"/> _____	Judge of the Circuit Court, 4th District, Position 4 Vote for One <input type="radio"/> Jerome LaRaine <input type="radio"/> _____ Judge of the Circuit Court, 4th District, Position 8 Vote for One <input type="radio"/> Eric Bergstrom <input type="radio"/> _____ Judge of the Circuit Court, 4th District, Position 12 Vote for One <input type="radio"/> Janice R Wilson <input type="radio"/> _____ Judge of the Circuit Court, 4th District, Position 16 Vote for One <input type="radio"/> Susan M Swerley <input type="radio"/> _____	County Commissioner District #14 Vote for One <input type="radio"/> Diane McKee <input type="radio"/> _____	

WARNING Any person who, by use of force or other means, unduly influences another to vote in any particular manner or to refrain from voting is subject to a fine. (ORS 254.470)

Vote Both Sides

Card 336 - Preprint 5106(5106A)

Republican

<div style="display: flex; justify-content: space-between;"> 5106 Official Ballot - Multnomah County, OR - May 8, 2012 </div> <div style="text-align: center; border: 1px solid black; padding: 2px; margin: 2px 0;"> Republican </div>																																															
<p>Instructions To Voter: Use a Pencil Or Pen (Blue or Black Ink) To ensure your vote counts, <u>completely fill in</u> the oval to the left of the response of your choice. To add a candidate who is not on the ballot, fill in the oval to the left of the name of the candidate you wish to add (write the candidate name on the line below).</p> <p>Attention! Remember to inspect your ballot for mistakes! If you make a mistake or damage your ballot, call your County Elections Office to ask for assistance.</p> <p>Check for Errors If you vote for more options than allowed, your vote will not count for that candidate or measure.</p>																																															
<table border="1" style="width: 100%; border-collapse: collapse;"> <tr> <th style="width: 30%; text-align: left; padding: 2px;">Federal</th> <th style="width: 30%; text-align: left; padding: 2px;">Judge of the Circuit Court of Appeals, Position 8 <small>Vote for One</small></th> <th style="width: 30%; text-align: left; padding: 2px;">Judge of the Circuit Court, 4th District, Position 23 <small>Vote for One</small></th> <th style="width: 10%; text-align: left; padding: 2px;">County Questions or Issues</th> </tr> <tr> <td style="padding: 2px;"> <input type="radio"/> Rick Santorum <input type="radio"/> Ron Paul <input type="radio"/> Newt Gingrich <input type="radio"/> Mitt Romney <input type="radio"/> <u> </u> <small>Vote for One</small> </td> <td style="padding: 2px;"> <input type="radio"/> John Volpert <input type="radio"/> Allan A. Iorio <input type="radio"/> James C. Egan <input type="radio"/> <u> </u> <small>Vote for One</small> </td> <td style="padding: 2px;"> <input type="radio"/> Edward Jones <input type="radio"/> <u> </u> <small>Vote for One</small> </td> <td style="padding: 2px; vertical-align: top;"> <p>26-125 local library funding; continues local option levy at current rate., Multnomah County libraries serve every neighborhood across the county with 18 local branches and central library. Two-thirds of library funding comes from a voter-approved levy. Renewal of the current levy will keep libraries open and maintain a majority of hours and services. If not renewed, most libraries will close, others will be open fewer hours, and library services will be greatly reduced.</p> </td> </tr> <tr> <td style="padding: 2px;"> <input type="radio"/> <u> </u> <small>Vote for One</small> </td> <td style="padding: 2px;"> <input type="radio"/> Judge of the Court of Appeals, Position 8 <small>Vote for One</small> <input type="radio"/> Lynn R. Nakamoto <input type="radio"/> <u> </u> <small>Vote for One</small> </td> <td style="padding: 2px;"> <input type="radio"/> Judith Hudson Malheur <input type="radio"/> <u> </u> <small>Vote for One</small> </td> <td style="padding: 2px; vertical-align: top;"> <p>Renewing the library levy will:</p> <p>Continue programs such as: story hours for babies and toddlers, after-school homework help for school students; summer reading programs for teens and more;</p> <p>Help teachers and students use library resources; provide homework helpers to assist children with school work.</p> </td> </tr> <tr> <td style="padding: 2px;"> <input type="radio"/> Ronald Green <input type="radio"/> Delia Lopez <input type="radio"/> <u> </u> <small>Vote for One</small> </td> <td style="padding: 2px;"> <input type="radio"/> Judge of the Court of Appeals, Position 9 <small>Vote for One</small> <input type="radio"/> Mikla Hadlock <input type="radio"/> <u> </u> <small>Vote for One</small> </td> <td style="padding: 2px;"> <input type="radio"/> Kathryn Villa Smith <input type="radio"/> <u> </u> <small>Vote for One</small> </td> <td style="padding: 2px; vertical-align: top;"> <p>Update books and materials; maintain free access to information;</p> <p>Continue book delivery to homebound senior citizens and retirement home residents.</p> <p>Fund hours and services at Central and neighborhood libraries.</p> <p>This levy does not raise property taxes. It continues the same rate of the previous library levy approved by voters. Estimated cost for the typical household will remain about \$11 per month for three years.</p> </td> </tr> <tr> <td style="padding: 2px;"> <input type="radio"/> State <small>Vote for One</small> <input type="radio"/> Krystal Baehler <input type="radio"/> <u> </u> <small>Vote for One</small> </td> <td style="padding: 2px;"> <input type="radio"/> Judge of the Court of Appeals, Position 10 <small>Vote for One</small> <input type="radio"/> Rex Armstrong <input type="radio"/> <u> </u> <small>Vote for One</small> </td> <td style="padding: 2px;"> <input type="radio"/> Cheryl Albrecht <input type="radio"/> <u> </u> <small>Vote for One</small> </td> <td style="padding: 2px; vertical-align: top;"> <p>Help teachers and students use library resources; provide homework helpers to assist children with school work.</p> <p>Update books and materials; maintain free access to information;</p> <p>Continue book delivery to homebound senior citizens and retirement home residents.</p> <p>Fund hours and services at Central and neighborhood libraries.</p> <p>This levy does not raise property taxes. It continues the same rate of the previous library levy approved by voters. Estimated cost for the typical household will remain about \$11 per month for three years.</p> </td> </tr> <tr> <td style="padding: 2px;"> <input type="radio"/> State Representative, 31st District <small>Vote for One</small> <input type="radio"/> Patrick Sheehan <input type="radio"/> <u> </u> <small>Vote for One</small> </td> <td style="padding: 2px;"> <input type="radio"/> Judge of the Circuit Court, 4th District, Position 3 <small>Vote for One</small> <input type="radio"/> Harry R. Hodson <input type="radio"/> <u> </u> <small>Vote for One</small> </td> <td style="padding: 2px;"> <input type="radio"/> Judge of the Circuit Court, 4th District, Position 2 <small>Vote for One</small> <input type="radio"/> Marc Southern Wyatt <input type="radio"/> <u> </u> <small>Vote for One</small> </td> <td style="padding: 2px; vertical-align: top;"> <p>Help teachers and students use library resources; provide homework helpers to assist children with school work.</p> <p>Update books and materials; maintain free access to information;</p> <p>Continue book delivery to homebound senior citizens and retirement home residents.</p> <p>Fund hours and services at Central and neighborhood libraries.</p> <p>This levy does not raise property taxes. It continues the same rate of the previous library levy approved by voters. Estimated cost for the typical household will remain about \$11 per month for three years.</p> </td> </tr> <tr> <td style="padding: 2px;"> <input type="radio"/> Nonpartisan State Judiciary <small>Vote for One</small> <input type="radio"/> Judge of the Supreme Court, Position 2 <small>Vote for One</small> <input type="radio"/> Dave Brewer <input type="radio"/> <u> </u> <small>Vote for One</small> </td> <td style="padding: 2px;"> <input type="radio"/> Judge of the Circuit Court, 4th District, Position 4 <small>Vote for One</small> <input type="radio"/> Adrienne Nelson <input type="radio"/> <u> </u> <small>Vote for One</small> </td> <td style="padding: 2px;"> <input type="radio"/> Judge of the Circuit Court, 4th District, Position 37 <small>Vote for One</small> <input type="radio"/> Paula J. Kurnhofer <input type="radio"/> <u> </u> <small>Vote for One</small> </td> <td style="padding: 2px; vertical-align: top;"> <p>The levy raises approximately \$326 million in 2012-13; \$345.8 million in 2013-14; \$345.5 million in 2014-15. The estimated tax cost for this measure is an ESTIMATE Only based on the best information available from the county assessor at the time of estimate.</p> </td> </tr> <tr> <td style="padding: 2px;"> <input type="radio"/> Judge of the Supreme Court, Position 3 <small>Vote for One</small> <input type="radio"/> <u> </u> <small>Vote for One</small> </td> <td style="padding: 2px;"> <input type="radio"/> Judge of the Circuit Court, 4th District, Position 7 <small>Vote for One</small> <input type="radio"/> Terrence LaBarre <input type="radio"/> <u> </u> <small>Vote for One</small> </td> <td style="padding: 2px;"> <input type="radio"/> <u> </u> <small>Vote for One</small> </td> <td style="padding: 2px; vertical-align: top;"> <p>The levy raises approximately \$326 million in 2012-13; \$345.8 million in 2013-14; \$345.5 million in 2014-15. The estimated tax cost for this measure is an ESTIMATE Only based on the best information available from the county assessor at the time of estimate.</p> </td> </tr> <tr> <td style="padding: 2px;"> <input type="radio"/> <u> </u> <small>Vote for One</small> </td> <td style="padding: 2px;"> <input type="radio"/> Judge of the Circuit Court, 4th District, Position 8 <small>Vote for One</small> <input type="radio"/> Eric J. Bergstrom <input type="radio"/> <u> </u> <small>Vote for One</small> </td> <td style="padding: 2px;"> <input type="radio"/> <u> </u> <small>Vote for One</small> </td> <td style="padding: 2px; vertical-align: top;"> <p>The levy raises approximately \$326 million in 2012-13; \$345.8 million in 2013-14; \$345.5 million in 2014-15. The estimated tax cost for this measure is an ESTIMATE Only based on the best information available from the county assessor at the time of estimate.</p> </td> </tr> <tr> <td style="padding: 2px;"> <input type="radio"/> Judge of the Supreme Court, Position 6 <small>Vote for One</small> <input type="radio"/> Virginia Linder <input type="radio"/> <u> </u> <small>Vote for One</small> </td> <td style="padding: 2px;"> <input type="radio"/> Judge of the Circuit Court, 4th District, Position 12 <small>Vote for One</small> <input type="radio"/> Janice R. Wilson <input type="radio"/> <u> </u> <small>Vote for One</small> </td> <td style="padding: 2px;"> <input type="radio"/> County Commissioner Dist #4 Hillsboro <input type="radio"/> <u> </u> <small>Vote for One</small> </td> <td style="padding: 2px; vertical-align: top;"> <p>The levy raises approximately \$326 million in 2012-13; \$345.8 million in 2013-14; \$345.5 million in 2014-15. The estimated tax cost for this measure is an ESTIMATE Only based on the best information available from the county assessor at the time of estimate.</p> </td> </tr> <tr> <td style="padding: 2px;"> <input type="radio"/> Judge of the Court of Appeals, Position 16 <small>Vote for One</small> <input type="radio"/> Rick Haslam <input type="radio"/> <u> </u> <small>Vote for One</small> </td> <td style="padding: 2px;"> <input type="radio"/> Judge of the Circuit Court, 4th District, Position 16 <small>Vote for One</small> <input type="radio"/> Susan M. Sertkey <input type="radio"/> <u> </u> <small>Vote for One</small> </td> <td style="padding: 2px;"> <input type="radio"/> Diane Melick <input type="radio"/> <u> </u> <small>Vote for One</small> </td> <td style="padding: 2px; vertical-align: top;"> <p>The levy raises approximately \$326 million in 2012-13; \$345.8 million in 2013-14; \$345.5 million in 2014-15. The estimated tax cost for this measure is an ESTIMATE Only based on the best information available from the county assessor at the time of estimate.</p> </td> </tr> </table>				Federal	Judge of the Circuit Court of Appeals, Position 8 <small>Vote for One</small>	Judge of the Circuit Court, 4th District, Position 23 <small>Vote for One</small>	County Questions or Issues	<input type="radio"/> Rick Santorum <input type="radio"/> Ron Paul <input type="radio"/> Newt Gingrich <input type="radio"/> Mitt Romney <input type="radio"/> <u> </u> <small>Vote for One</small>	<input type="radio"/> John Volpert <input type="radio"/> Allan A. Iorio <input type="radio"/> James C. Egan <input type="radio"/> <u> </u> <small>Vote for One</small>	<input type="radio"/> Edward Jones <input type="radio"/> <u> </u> <small>Vote for One</small>	<p>26-125 local library funding; continues local option levy at current rate., Multnomah County libraries serve every neighborhood across the county with 18 local branches and central library. Two-thirds of library funding comes from a voter-approved levy. Renewal of the current levy will keep libraries open and maintain a majority of hours and services. If not renewed, most libraries will close, others will be open fewer hours, and library services will be greatly reduced.</p>	<input type="radio"/> <u> </u> <small>Vote for One</small>	<input type="radio"/> Judge of the Court of Appeals, Position 8 <small>Vote for One</small> <input type="radio"/> Lynn R. Nakamoto <input type="radio"/> <u> </u> <small>Vote for One</small>	<input type="radio"/> Judith Hudson Malheur <input type="radio"/> <u> </u> <small>Vote for One</small>	<p>Renewing the library levy will:</p> <p>Continue programs such as: story hours for babies and toddlers, after-school homework help for school students; summer reading programs for teens and more;</p> <p>Help teachers and students use library resources; provide homework helpers to assist children with school work.</p>	<input type="radio"/> Ronald Green <input type="radio"/> Delia Lopez <input type="radio"/> <u> </u> <small>Vote for One</small>	<input type="radio"/> Judge of the Court of Appeals, Position 9 <small>Vote for One</small> <input type="radio"/> Mikla Hadlock <input type="radio"/> <u> </u> <small>Vote for One</small>	<input type="radio"/> Kathryn Villa Smith <input type="radio"/> <u> </u> <small>Vote for One</small>	<p>Update books and materials; maintain free access to information;</p> <p>Continue book delivery to homebound senior citizens and retirement home residents.</p> <p>Fund hours and services at Central and neighborhood libraries.</p> <p>This levy does not raise property taxes. It continues the same rate of the previous library levy approved by voters. Estimated cost for the typical household will remain about \$11 per month for three years.</p>	<input type="radio"/> State <small>Vote for One</small> <input type="radio"/> Krystal Baehler <input type="radio"/> <u> </u> <small>Vote for One</small>	<input type="radio"/> Judge of the Court of Appeals, Position 10 <small>Vote for One</small> <input type="radio"/> Rex Armstrong <input type="radio"/> <u> </u> <small>Vote for One</small>	<input type="radio"/> Cheryl Albrecht <input type="radio"/> <u> </u> <small>Vote for One</small>	<p>Help teachers and students use library resources; provide homework helpers to assist children with school work.</p> <p>Update books and materials; maintain free access to information;</p> <p>Continue book delivery to homebound senior citizens and retirement home residents.</p> <p>Fund hours and services at Central and neighborhood libraries.</p> <p>This levy does not raise property taxes. It continues the same rate of the previous library levy approved by voters. Estimated cost for the typical household will remain about \$11 per month for three years.</p>	<input type="radio"/> State Representative, 31st District <small>Vote for One</small> <input type="radio"/> Patrick Sheehan <input type="radio"/> <u> </u> <small>Vote for One</small>	<input type="radio"/> Judge of the Circuit Court, 4th District, Position 3 <small>Vote for One</small> <input type="radio"/> Harry R. Hodson <input type="radio"/> <u> </u> <small>Vote for One</small>	<input type="radio"/> Judge of the Circuit Court, 4th District, Position 2 <small>Vote for One</small> <input type="radio"/> Marc Southern Wyatt <input type="radio"/> <u> </u> <small>Vote for One</small>	<p>Help teachers and students use library resources; provide homework helpers to assist children with school work.</p> <p>Update books and materials; maintain free access to information;</p> <p>Continue book delivery to homebound senior citizens and retirement home residents.</p> <p>Fund hours and services at Central and neighborhood libraries.</p> <p>This levy does not raise property taxes. It continues the same rate of the previous library levy approved by voters. Estimated cost for the typical household will remain about \$11 per month for three years.</p>	<input type="radio"/> Nonpartisan State Judiciary <small>Vote for One</small> <input type="radio"/> Judge of the Supreme Court, Position 2 <small>Vote for One</small> <input type="radio"/> Dave Brewer <input type="radio"/> <u> </u> <small>Vote for One</small>	<input type="radio"/> Judge of the Circuit Court, 4th District, Position 4 <small>Vote for One</small> <input type="radio"/> Adrienne Nelson <input type="radio"/> <u> </u> <small>Vote for One</small>	<input type="radio"/> Judge of the Circuit Court, 4th District, Position 37 <small>Vote for One</small> <input type="radio"/> Paula J. Kurnhofer <input type="radio"/> <u> </u> <small>Vote for One</small>	<p>The levy raises approximately \$326 million in 2012-13; \$345.8 million in 2013-14; \$345.5 million in 2014-15. The estimated tax cost for this measure is an ESTIMATE Only based on the best information available from the county assessor at the time of estimate.</p>	<input type="radio"/> Judge of the Supreme Court, Position 3 <small>Vote for One</small> <input type="radio"/> <u> </u> <small>Vote for One</small>	<input type="radio"/> Judge of the Circuit Court, 4th District, Position 7 <small>Vote for One</small> <input type="radio"/> Terrence LaBarre <input type="radio"/> <u> </u> <small>Vote for One</small>	<input type="radio"/> <u> </u> <small>Vote for One</small>	<p>The levy raises approximately \$326 million in 2012-13; \$345.8 million in 2013-14; \$345.5 million in 2014-15. The estimated tax cost for this measure is an ESTIMATE Only based on the best information available from the county assessor at the time of estimate.</p>	<input type="radio"/> <u> </u> <small>Vote for One</small>	<input type="radio"/> Judge of the Circuit Court, 4th District, Position 8 <small>Vote for One</small> <input type="radio"/> Eric J. Bergstrom <input type="radio"/> <u> </u> <small>Vote for One</small>	<input type="radio"/> <u> </u> <small>Vote for One</small>	<p>The levy raises approximately \$326 million in 2012-13; \$345.8 million in 2013-14; \$345.5 million in 2014-15. The estimated tax cost for this measure is an ESTIMATE Only based on the best information available from the county assessor at the time of estimate.</p>	<input type="radio"/> Judge of the Supreme Court, Position 6 <small>Vote for One</small> <input type="radio"/> Virginia Linder <input type="radio"/> <u> </u> <small>Vote for One</small>	<input type="radio"/> Judge of the Circuit Court, 4th District, Position 12 <small>Vote for One</small> <input type="radio"/> Janice R. Wilson <input type="radio"/> <u> </u> <small>Vote for One</small>	<input type="radio"/> County Commissioner Dist #4 Hillsboro <input type="radio"/> <u> </u> <small>Vote for One</small>	<p>The levy raises approximately \$326 million in 2012-13; \$345.8 million in 2013-14; \$345.5 million in 2014-15. The estimated tax cost for this measure is an ESTIMATE Only based on the best information available from the county assessor at the time of estimate.</p>	<input type="radio"/> Judge of the Court of Appeals, Position 16 <small>Vote for One</small> <input type="radio"/> Rick Haslam <input type="radio"/> <u> </u> <small>Vote for One</small>	<input type="radio"/> Judge of the Circuit Court, 4th District, Position 16 <small>Vote for One</small> <input type="radio"/> Susan M. Sertkey <input type="radio"/> <u> </u> <small>Vote for One</small>	<input type="radio"/> Diane Melick <input type="radio"/> <u> </u> <small>Vote for One</small>	<p>The levy raises approximately \$326 million in 2012-13; \$345.8 million in 2013-14; \$345.5 million in 2014-15. The estimated tax cost for this measure is an ESTIMATE Only based on the best information available from the county assessor at the time of estimate.</p>
Federal	Judge of the Circuit Court of Appeals, Position 8 <small>Vote for One</small>	Judge of the Circuit Court, 4th District, Position 23 <small>Vote for One</small>	County Questions or Issues																																												
<input type="radio"/> Rick Santorum <input type="radio"/> Ron Paul <input type="radio"/> Newt Gingrich <input type="radio"/> Mitt Romney <input type="radio"/> <u> </u> <small>Vote for One</small>	<input type="radio"/> John Volpert <input type="radio"/> Allan A. Iorio <input type="radio"/> James C. Egan <input type="radio"/> <u> </u> <small>Vote for One</small>	<input type="radio"/> Edward Jones <input type="radio"/> <u> </u> <small>Vote for One</small>	<p>26-125 local library funding; continues local option levy at current rate., Multnomah County libraries serve every neighborhood across the county with 18 local branches and central library. Two-thirds of library funding comes from a voter-approved levy. Renewal of the current levy will keep libraries open and maintain a majority of hours and services. If not renewed, most libraries will close, others will be open fewer hours, and library services will be greatly reduced.</p>																																												
<input type="radio"/> <u> </u> <small>Vote for One</small>	<input type="radio"/> Judge of the Court of Appeals, Position 8 <small>Vote for One</small> <input type="radio"/> Lynn R. Nakamoto <input type="radio"/> <u> </u> <small>Vote for One</small>	<input type="radio"/> Judith Hudson Malheur <input type="radio"/> <u> </u> <small>Vote for One</small>	<p>Renewing the library levy will:</p> <p>Continue programs such as: story hours for babies and toddlers, after-school homework help for school students; summer reading programs for teens and more;</p> <p>Help teachers and students use library resources; provide homework helpers to assist children with school work.</p>																																												
<input type="radio"/> Ronald Green <input type="radio"/> Delia Lopez <input type="radio"/> <u> </u> <small>Vote for One</small>	<input type="radio"/> Judge of the Court of Appeals, Position 9 <small>Vote for One</small> <input type="radio"/> Mikla Hadlock <input type="radio"/> <u> </u> <small>Vote for One</small>	<input type="radio"/> Kathryn Villa Smith <input type="radio"/> <u> </u> <small>Vote for One</small>	<p>Update books and materials; maintain free access to information;</p> <p>Continue book delivery to homebound senior citizens and retirement home residents.</p> <p>Fund hours and services at Central and neighborhood libraries.</p> <p>This levy does not raise property taxes. It continues the same rate of the previous library levy approved by voters. Estimated cost for the typical household will remain about \$11 per month for three years.</p>																																												
<input type="radio"/> State <small>Vote for One</small> <input type="radio"/> Krystal Baehler <input type="radio"/> <u> </u> <small>Vote for One</small>	<input type="radio"/> Judge of the Court of Appeals, Position 10 <small>Vote for One</small> <input type="radio"/> Rex Armstrong <input type="radio"/> <u> </u> <small>Vote for One</small>	<input type="radio"/> Cheryl Albrecht <input type="radio"/> <u> </u> <small>Vote for One</small>	<p>Help teachers and students use library resources; provide homework helpers to assist children with school work.</p> <p>Update books and materials; maintain free access to information;</p> <p>Continue book delivery to homebound senior citizens and retirement home residents.</p> <p>Fund hours and services at Central and neighborhood libraries.</p> <p>This levy does not raise property taxes. It continues the same rate of the previous library levy approved by voters. Estimated cost for the typical household will remain about \$11 per month for three years.</p>																																												
<input type="radio"/> State Representative, 31st District <small>Vote for One</small> <input type="radio"/> Patrick Sheehan <input type="radio"/> <u> </u> <small>Vote for One</small>	<input type="radio"/> Judge of the Circuit Court, 4th District, Position 3 <small>Vote for One</small> <input type="radio"/> Harry R. Hodson <input type="radio"/> <u> </u> <small>Vote for One</small>	<input type="radio"/> Judge of the Circuit Court, 4th District, Position 2 <small>Vote for One</small> <input type="radio"/> Marc Southern Wyatt <input type="radio"/> <u> </u> <small>Vote for One</small>	<p>Help teachers and students use library resources; provide homework helpers to assist children with school work.</p> <p>Update books and materials; maintain free access to information;</p> <p>Continue book delivery to homebound senior citizens and retirement home residents.</p> <p>Fund hours and services at Central and neighborhood libraries.</p> <p>This levy does not raise property taxes. It continues the same rate of the previous library levy approved by voters. Estimated cost for the typical household will remain about \$11 per month for three years.</p>																																												
<input type="radio"/> Nonpartisan State Judiciary <small>Vote for One</small> <input type="radio"/> Judge of the Supreme Court, Position 2 <small>Vote for One</small> <input type="radio"/> Dave Brewer <input type="radio"/> <u> </u> <small>Vote for One</small>	<input type="radio"/> Judge of the Circuit Court, 4th District, Position 4 <small>Vote for One</small> <input type="radio"/> Adrienne Nelson <input type="radio"/> <u> </u> <small>Vote for One</small>	<input type="radio"/> Judge of the Circuit Court, 4th District, Position 37 <small>Vote for One</small> <input type="radio"/> Paula J. Kurnhofer <input type="radio"/> <u> </u> <small>Vote for One</small>	<p>The levy raises approximately \$326 million in 2012-13; \$345.8 million in 2013-14; \$345.5 million in 2014-15. The estimated tax cost for this measure is an ESTIMATE Only based on the best information available from the county assessor at the time of estimate.</p>																																												
<input type="radio"/> Judge of the Supreme Court, Position 3 <small>Vote for One</small> <input type="radio"/> <u> </u> <small>Vote for One</small>	<input type="radio"/> Judge of the Circuit Court, 4th District, Position 7 <small>Vote for One</small> <input type="radio"/> Terrence LaBarre <input type="radio"/> <u> </u> <small>Vote for One</small>	<input type="radio"/> <u> </u> <small>Vote for One</small>	<p>The levy raises approximately \$326 million in 2012-13; \$345.8 million in 2013-14; \$345.5 million in 2014-15. The estimated tax cost for this measure is an ESTIMATE Only based on the best information available from the county assessor at the time of estimate.</p>																																												
<input type="radio"/> <u> </u> <small>Vote for One</small>	<input type="radio"/> Judge of the Circuit Court, 4th District, Position 8 <small>Vote for One</small> <input type="radio"/> Eric J. Bergstrom <input type="radio"/> <u> </u> <small>Vote for One</small>	<input type="radio"/> <u> </u> <small>Vote for One</small>	<p>The levy raises approximately \$326 million in 2012-13; \$345.8 million in 2013-14; \$345.5 million in 2014-15. The estimated tax cost for this measure is an ESTIMATE Only based on the best information available from the county assessor at the time of estimate.</p>																																												
<input type="radio"/> Judge of the Supreme Court, Position 6 <small>Vote for One</small> <input type="radio"/> Virginia Linder <input type="radio"/> <u> </u> <small>Vote for One</small>	<input type="radio"/> Judge of the Circuit Court, 4th District, Position 12 <small>Vote for One</small> <input type="radio"/> Janice R. Wilson <input type="radio"/> <u> </u> <small>Vote for One</small>	<input type="radio"/> County Commissioner Dist #4 Hillsboro <input type="radio"/> <u> </u> <small>Vote for One</small>	<p>The levy raises approximately \$326 million in 2012-13; \$345.8 million in 2013-14; \$345.5 million in 2014-15. The estimated tax cost for this measure is an ESTIMATE Only based on the best information available from the county assessor at the time of estimate.</p>																																												
<input type="radio"/> Judge of the Court of Appeals, Position 16 <small>Vote for One</small> <input type="radio"/> Rick Haslam <input type="radio"/> <u> </u> <small>Vote for One</small>	<input type="radio"/> Judge of the Circuit Court, 4th District, Position 16 <small>Vote for One</small> <input type="radio"/> Susan M. Sertkey <input type="radio"/> <u> </u> <small>Vote for One</small>	<input type="radio"/> Diane Melick <input type="radio"/> <u> </u> <small>Vote for One</small>	<p>The levy raises approximately \$326 million in 2012-13; \$345.8 million in 2013-14; \$345.5 million in 2014-15. The estimated tax cost for this measure is an ESTIMATE Only based on the best information available from the county assessor at the time of estimate.</p>																																												

WARNING: Any person who, by use of force or other means, unduly influences another to vote for any particular measure or to refrain from voting is subject to a fine. (ORS 254.470)

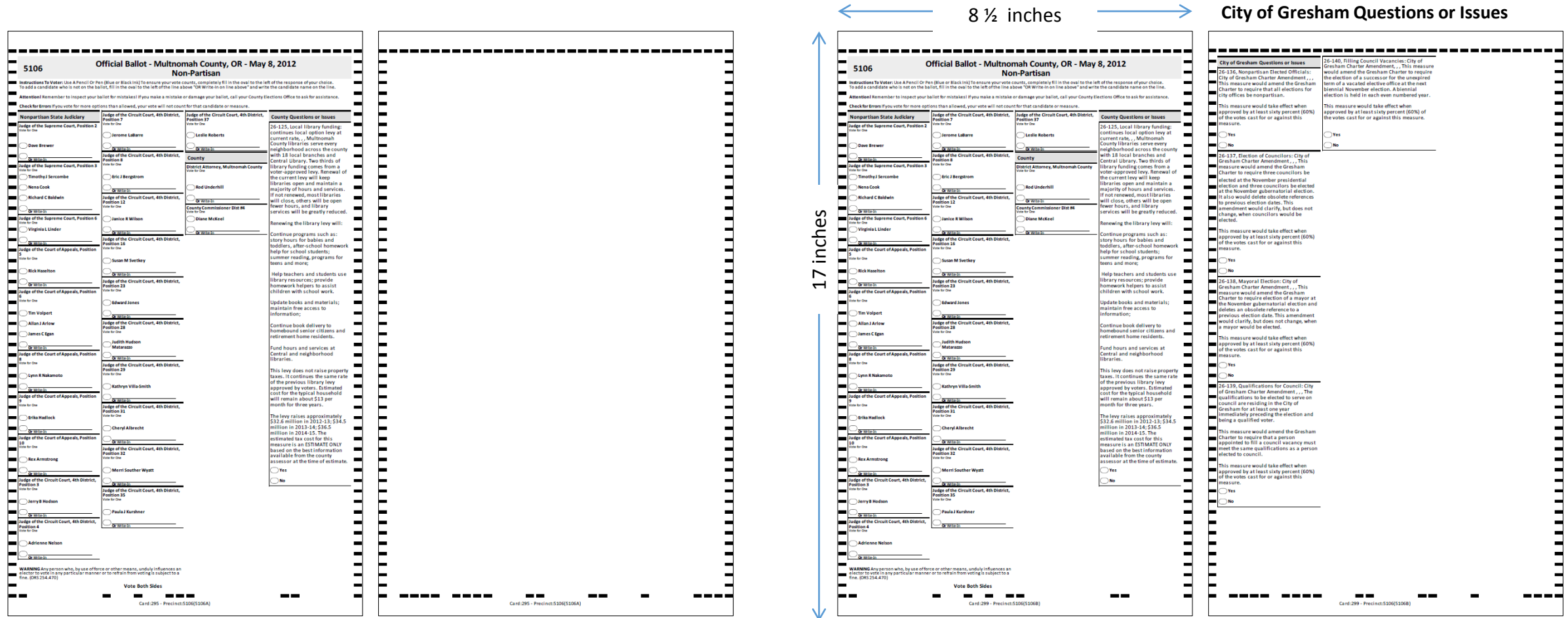
Card:298 - Precinct:5106(5106A)

Card:295 -Precinct:5106(5106A)

Card:336 - Precinct:5106(5106A)

Card:337 - Precinct:5106(5106A)

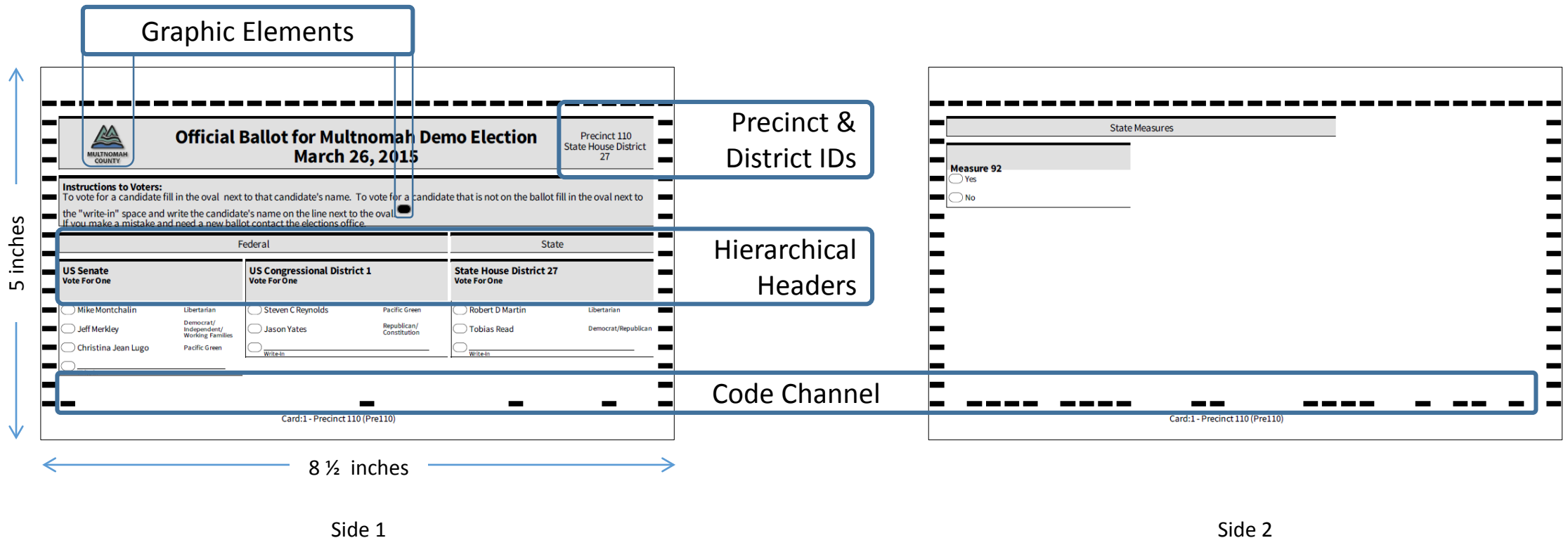
Primary Election – Showing Geographic Splits



Card:295 - Precinct: 5106(5106A)

Card:299 - Precinct: 5106(5106B)

Small Format Ballot (2-sided)



The diagram illustrates a 2-sided ballot layout with dimensions of 5 inches in height and 8 1/2 inches in width. The layout is divided into two sides, Side 1 and Side 2.

Side 1:

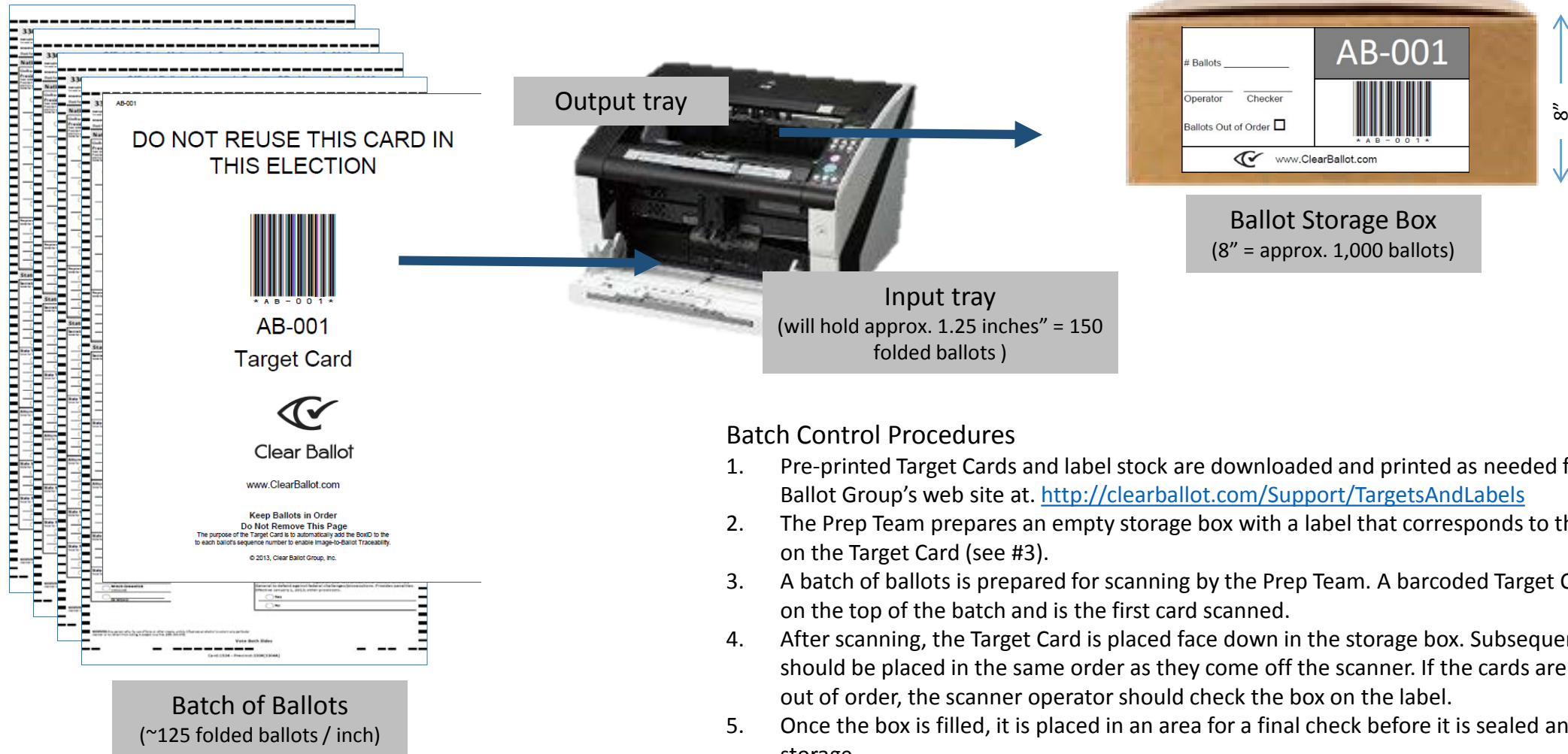
- Graphic Elements:** Includes the Multnomah County logo and the title "Official Ballot for Multnomah Demo Election March 26, 2015".
- Precinct & District IDs:** Includes "Precinct 110 State House District 27".
- Instructions to Voters:** "To vote for a candidate fill in the oval next to that candidate's name. To vote for a candidate that is not on the ballot fill in the oval next to the 'write-in' space and write the candidate's name on the line next to the oval. If you make a mistake and need a new ballot contact the elections office."
- Hierarchical Headers:**
 - Federal:**
 - US Senate Vote For One:** Mike Montchalini (Libertarian), Jeff Merkley (Democrat/Independent/Working Families), Christina Jean Lugo (Pacific Green), and a write-in space.
 - US Congressional District 1 Vote For One:** Steven C Reynolds (Pacific Green), Jason Yates (Republican/Constitution), and a write-in space.
 - State:**
 - State House District 27 Vote For One:** Robert D Martin (Libertarian), Tobias Read (Democrat/Republican), and a write-in space.
- Code Channel:** A series of black bars at the bottom of the ballot.

Side 2:

- State Measures:** Includes "Measure 92" with "Yes" and "No" options.
- Code Channel:** A series of black bars at the bottom of the ballot.

Ballots of this size scan at 7,800 cards / hour in landscape mode.

Batch Control Procedures



Batch Control Procedures

1. Pre-printed Target Cards and label stock are downloaded and printed as needed from Clear Ballot Group's web site at: <http://clearballot.com/Support/TargetsAndLabels>
2. The Prep Team prepares an empty storage box with a label that corresponds to the barcode on the Target Card (see #3).
3. A batch of ballots is prepared for scanning by the Prep Team. A barcoded Target Card is placed on the top of the batch and is the first card scanned.
4. After scanning, the Target Card is placed face down in the storage box. Subsequent ballots should be placed in the same order as they come off the scanner. If the cards are known to be out of order, the scanner operator should check the box on the label.
5. Once the box is filled, it is placed in an area for a final check before it is sealed and moved to storage.